



Price
£325,000

Freehold

2x  1x  1x 

**Bramley Walk,
Langshott, Horley,
Surrey, RH6**

OVER 60?

Secure this property
for up to **59% less!**

cubitt&west
Helping you move forwards



Main features

- Cul-de-sac with communal parking
- Some updating required
- Ideal first house or investment opportunity
- Lounge/diner with direct access to rear garden
- Ideal for commuters - close to public transport links which offer direct route to town centre and station

Accommodation

GROUND FLOOR

Entrance Hall

Lounge/Diner: 13'5 x 12'6 (4.09m x 3.81m)

Kitchen: 9'5 x 6'1 (2.87m x 1.86m)

FIRST FLOOR

Landing

Bedroom 1: 12'6 up to fitted wardrobes x 8'3 (3.81m x 2.52m)

Bedroom 2: 9'4 x 8'1 (2.85m x 2.47m)

Shower Room

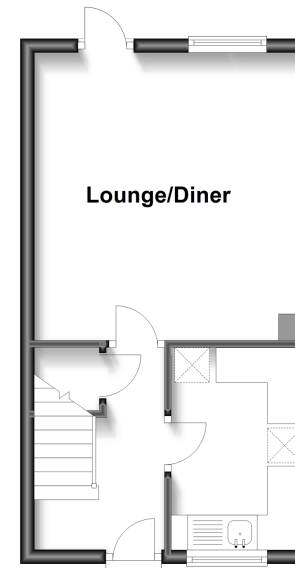
OUTSIDE

Off Road Parking

Rear Garden

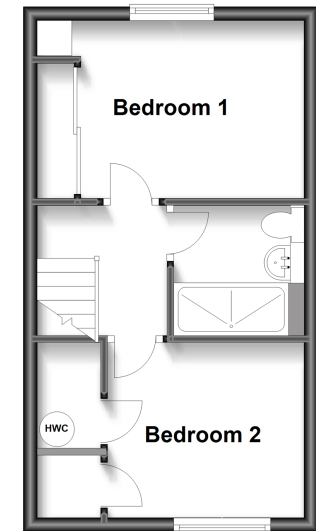
Ground Floor

Approx. 27.5 sq. metres (295.5 sq. feet)



First Floor

Approx. 27.5 sq. metres (295.5 sq. feet)



Call Horley - 01293 785338 ■ cubittandwest.co.uk

■ Legal advice should be taken to verify fixtures/fittings, planning, alterations and/or lease details
 ■ Through a Homewise Home For Life Plan people aged 60+ can secure this property for up to 59% less, by purchasing a Lifetime Lease.

■ Appliances & services are untested, dimensions are approximate and floor plans are not to scale