



OVER 60?

Secure this property
for up to **59% less!**

Price

£325,000

Freehold

2x  1x  1x 

**Powell Close, Horley,
Surrey, RH6**

cubitt&west
Helping you move forwards



Main features

- End of chain link semi-detached home
- Some updating required
- Enclosed rear garden
- Attached garage with off road parking
- Cul-de-sac located in the popular Meath Green area

Accommodation

GROUND FLOOR

Entrance Hall

Kitchen : 7'9 x 7'3 (2.36m x 2.21m)

Lounge/Diner: 13'1 x 13'1 (3.99m x 3.99m)

FIRST FLOOR

Landing

Bedroom 1: 10'4 x 9'8 (3.15m x 2.95m)

Bedroom 2: 8'1 x 7'5 (2.47m x 2.26m)

Bathroom: 8'7 x 5'4 (2.62m x 1.63m)

OUTSIDE

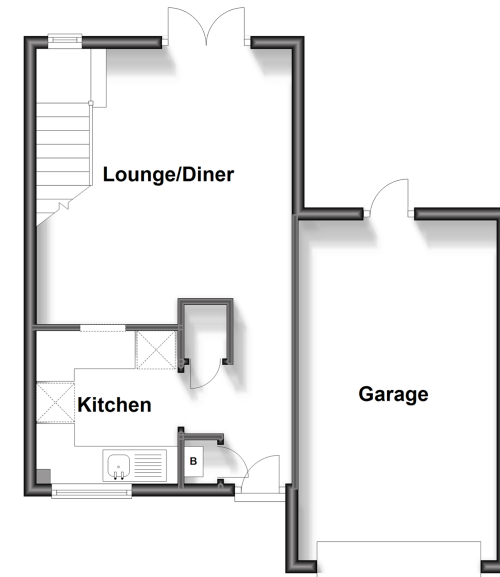
Driveway

Garage

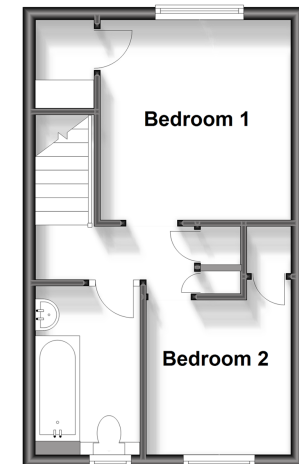
Front Garden

Rear Garden

Ground Floor
Approx. 45.0 sq. metres (484.5 sq. feet)



First Floor
Approx. 27.7 sq. metres (298.4 sq. feet)



Call Horley - 01293 785338 ■ cubittandwest.co.uk

- Legal advice should be taken to verify fixtures/fittings, planning, alterations and/or lease details
- Appliances & services are untested, dimensions are approximate and floor plans are not to scale
- Through a Homewise Home For Life Plan people aged 60+ can secure this property for up to 59% less, by purchasing a Lifetime Lease.



20810754/20231117/DT/EM20