



**Price**

**£175,000**

**Leasehold**

1x  1x  1x 

**Mitchell Court, Massetts  
Road, Horley, Surrey,  
RH6**

**cubitt&west**  
Helping you move forwards





## Main features

- Lounge/diner with patio door to outside area
- Well maintained communal gardens & communal parking
- Town centre location
- Retirement complex for over 60's
- Redecorated and refurbished throughout

## Accommodation

### GROUND FLOOR

Entrance Hall

Lounge/Diner: 19'7 x 10'7 (5.97m x 3.23m)

Kitchen: 8'3 x 7'5 (2.52m x 2.26m)

Bedroom: 13'6 x 9'1 up to fitted wardrobes (4.12m x 2.77m)

Shower Room

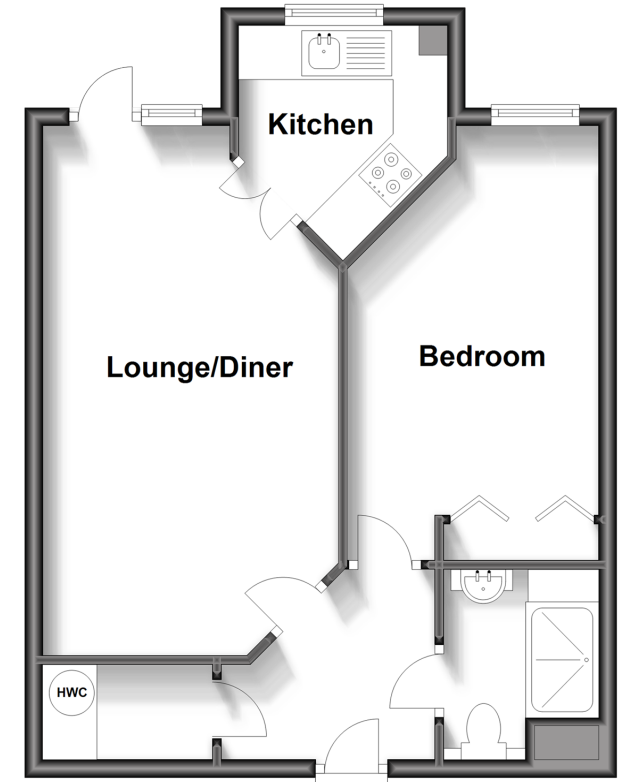
### OUTSIDE

Communal Parking

Communal Gardens

## Ground Floor

Approx. 45.5 sq. metres (489.9 sq. feet)



**Call Horley - 01293 785338 ■ [cubittandwest.co.uk](http://cubittandwest.co.uk)**

- Legal advice should be taken to verify fixtures/fittings, planning, alterations and/or lease details
- Appliances & services are untested, dimensions are approximate and floor plans are not to scale



20810793/20240405/TP/SI