



Price
£440,000

Freehold

3x  1x  2x 

**Forge Place, Horley,
Surrey, RH6**

cubitt&west
Helping you move forwards



Main features

- Landscaped rear garden with gated rear access
- Private development
- Ancillary room & store room (former garage)
- Well presented throughout
- Conveniently located for public transport links

Accommodation

GROUND FLOOR

Entrance Hall

Lounge: 15'0 x 11'0 (4.58m x 3.36m)

Kitchen/Diner: 14'0 x 11'0 (4.27m x 3.36m)

Cloakroom

FIRST FLOOR

Landing

Bedroom 1: 14'0 x 8'0 (4.27m x 2.44m)

Bedroom 2: 13'0 x 8'0 (3.97m x 2.44m)

Bedroom 3: 8'0 x 6'0 (2.44m x 1.83m)

Bathroom

OUTSIDE

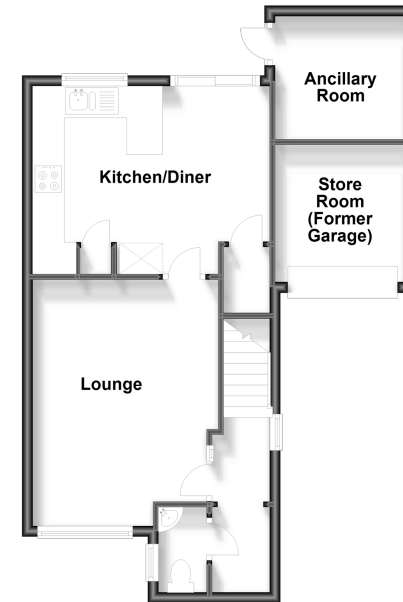
Off Road Parking

Ancillary Room: 8'0 x 7'0 (2.44m x 2.14m)

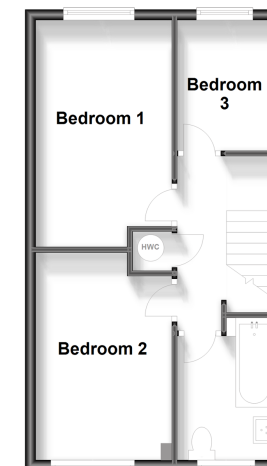
Store Room (Former Garage)

Rear Garden

Ground Floor
Approx. 52.3 sq. metres (562.7 sq. feet)



First Floor
Approx. 37.0 sq. metres (398.7 sq. feet)



Call Horley - 01293 785338 ■ cubittandwest.co.uk

- Legal advice should be taken to verify fixtures/fittings, planning, alterations and/or lease details
- Appliances & services are untested, dimensions are approximate and floor plans are not to scale



20810798/20231107/DT/AG