



**Price**  
**£550,000**

**Freehold**

4x  3x  2x 

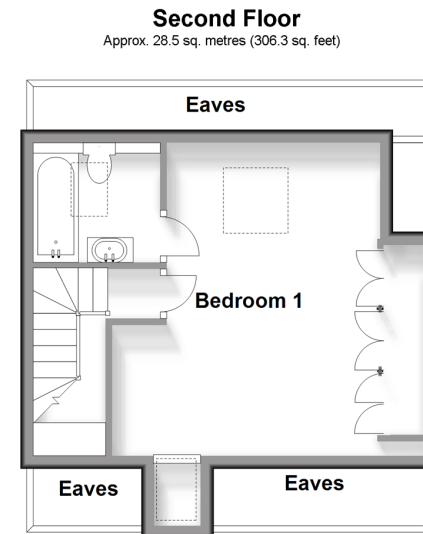
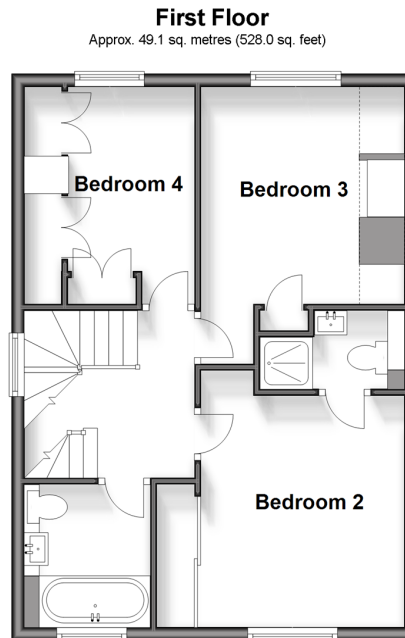
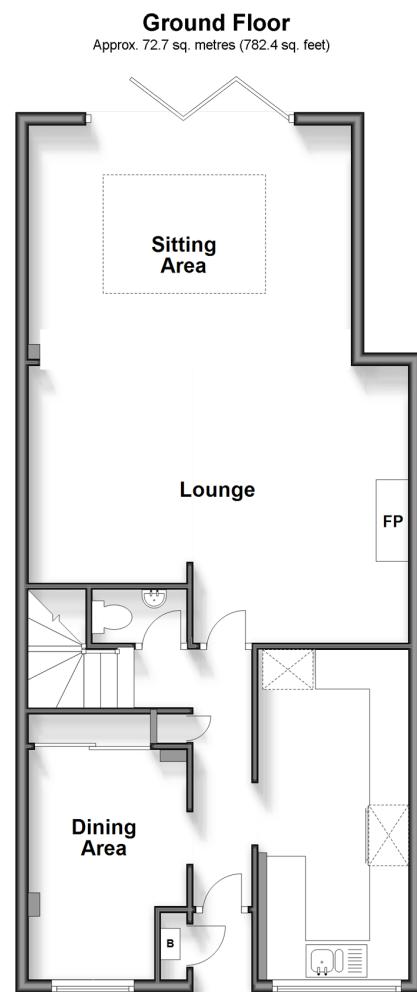
**Gorse Drive, Smallfield,  
Surrey, RH6**

**OVER 60?**

Secure this property  
for up to **59% less!**

**cubitt&west**  
Helping you move forwards





## Accommodation

### GROUND FLOOR

Entrance Hall  
Lounge/Sitting Area: 23'0 x 19'11 (7.02m x 6.07m)  
Dining Area: 11'0 x 7'10 (3.36m x 2.39m)  
Kitchen: 16'0 x 8'0 (4.88m x 2.44m)  
Cloakroom

### FIRST FLOOR

Landing  
Bedroom 2: 11'0 x 10'0 (3.36m x 3.05m)  
En-Suite Shower Room  
Bedroom 3: 11'0 up to fitted cupboard x 10'0 (3.36m x 3.05m)  
Bedroom 4: 11'0 x 9'0 (3.36m x 2.75m)  
Bathroom

### SECOND FLOOR

Landing  
Bedroom 1: 15'11 x 15'10 (4.85m x 4.83m)  
En-suite Bathroom  
Eaves

### OUTSIDE

Front Garden  
Off Road Parking  
Rear Garden



## Main features

- Well proportioned 3-storey family home, with large extended lounge/sitting area
- Sought after location
- Extended loft to include main bedroom and en-suite bathroom
- Well presented throughout
- Off road parking for up to 3 cars



### Nearest Schools

Primary Schools: Burstow Primary 0.3 miles, Copthorne CofE Junior School 2.5 miles, Manorfield Primary and Nursery School 2.5 miles  
Secondary Schools: Oakwood School 1.8 miles, Cornfield School 3.7 miles, Hazelwick School 4.1 miles



### Transport Information

Train Stations: Horley 3.0 miles, Three Bridges 4.4 miles, Salfords 4.5 miles



### Address

Gorse Drive, Smallfield, Surrey, RH6



### Directions

For directions to this property please contact us.





**cubitt&west**  
Helping you move forwards

Call Horley Branch 01293 785338 ■ [cubittandwest.co.uk](https://cubittandwest.co.uk)



■ Legal advice should be taken to verify fixtures/fittings, planning, alterations and/or lease details ■ Appliances & services are untested, dimensions are approximate and floor plans are not to scale  
■ Through a Homewise Home For Life Plan people aged 60+ can secure this property for up to 59% less, by purchasing a Lifetime Lease.



20810820/20240308/TP/AG