



OVER 60?

Secure this property
for up to **59% less!**

Price

£450,000

Freehold

3x  2x  1x 

**Webber Street, Horley,
Surrey, RH6**

cubitt & west
Helping you move forwards



Main features

- Sought after location
- En-suite to main bedroom
- Off road parking
- Well presented throughout
- NHBC warranty in place

Accommodation

GROUND FLOOR

Hallway

Lounge: 17'0 x 14'0 (5.19m x 4.27m)

Kitchen/Diner: 16'1 x 9'0 (4.91m x 2.75m)

WC

FIRST FLOOR

Landing

Bedroom 1: 12'1 x 10'0 (3.69m x 3.05m)

En-Suite: 10'1 x 6'1 (3.08m x 1.86m)

Bedroom 2: 10'1 x 7'0 (3.08m x 2.14m)

Bedroom 3: 10'1 x 7'0 (3.08m x 2.14m)

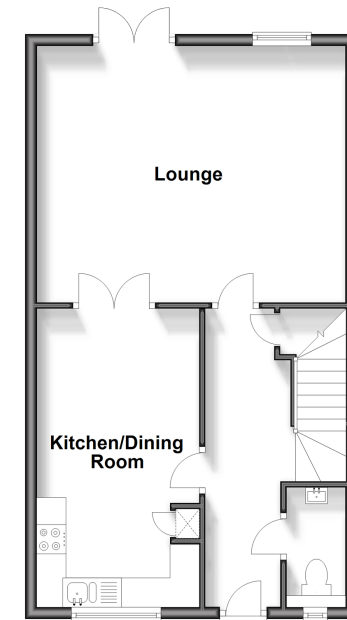
Bathroom: 7'1 x 6'0 (2.16m x 1.83m)

OUTSIDE

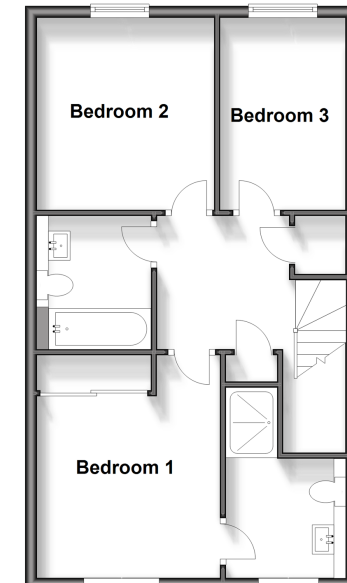
Driveway

Rear Garden

Ground Floor
Approx. 50.4 sq. metres (542.2 sq. feet)



First Floor
Approx. 50.4 sq. metres (542.2 sq. feet)



Call Horley - 01293 785338 ■ cubittandwest.co.uk

- Legal advice should be taken to verify fixtures/fittings, planning, alterations and/or lease details
- Appliances & services are untested, dimensions are approximate and floor plans are not to scale
- Through a Homewise Home For Life Plan people aged 60+ can secure this property for up to 59% less, by purchasing a Lifetime Lease.



20810916/20240417/BS1/AG