



OVER 60?

Secure this property
for up to **59% less!**

Price

£450,000

Freehold

3x  2x  2x 

**Church Road, Horley,
Surrey, RH6**

cubitt&west
Helping you move forwards

Accommodation

GROUND FLOOR

Hallway

Diner: 11'1 x 8'1 (3.38m x 2.47m)

Lounge: 13'1 x 12'0 (3.99m x 3.66m)

Kitchen: 17'0 x 6'1 (5.19m x 1.86m)

Utility Room: 10'0 x 5'1 (3.05m x 1.55m)

SPLIT LEVEL FIRST FLOOR

Landing

Bathroom

Bedroom 2: 13'1 x 12'0 (3.99m x 3.66m)

Bedroom 3: 11'1 x 8'1 (3.38m x 2.47m)

SECOND FLOOR

Bedroom 1: 16'1 x 10'0 (4.91m x 3.05m)

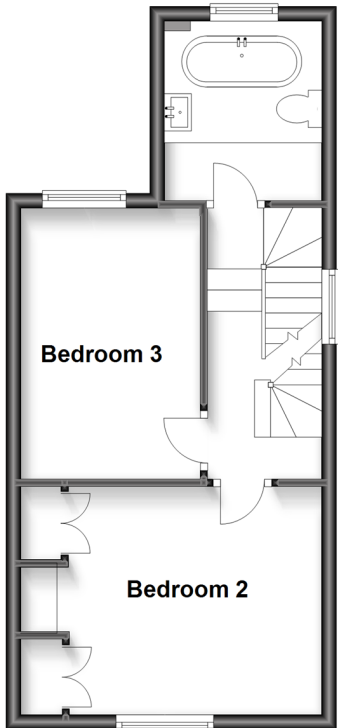
En-suite

OUTSIDE

Outhouse / Garden: 25'0 x 17'0 (7.63m x 5.19m)

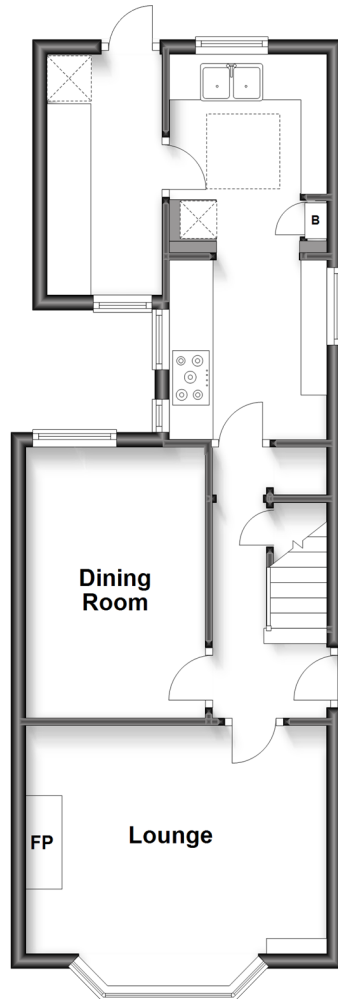
Split Level First Floor

Approx. 33.3 sq. metres (358.6 sq. feet)



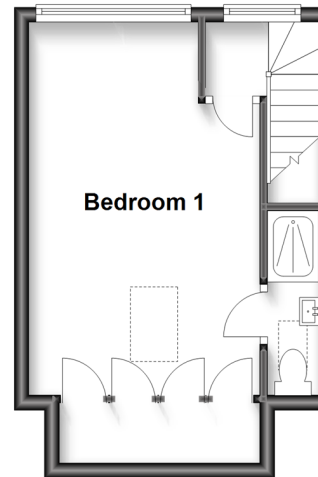
Ground Floor

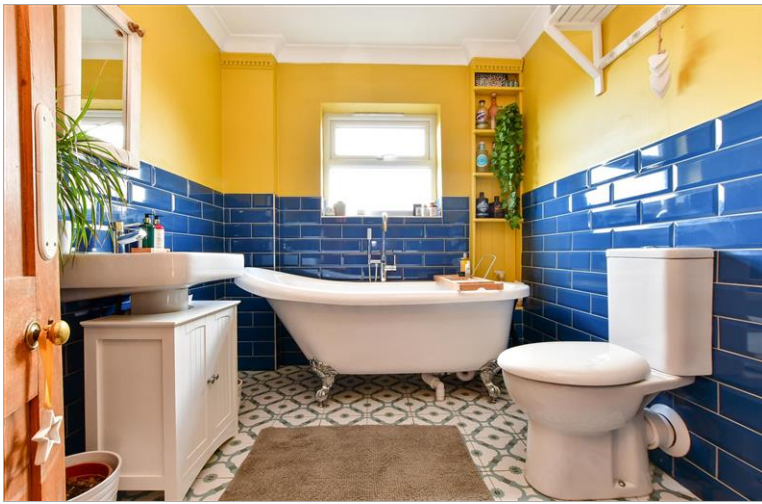
Approx. 45.0 sq. metres (484.2 sq. feet)



Second Floor

Approx. 22.4 sq. metres (240.9 sq. feet)





Main features

- Wonderful Victorian property with period features
- Walking distance to town centre, train links and schools
- Immaculately presented throughout
- Loft conversion with large double bedroom and en-suite
- Large garden with outbuilding suitable for home office / gym



Nearest Schools

Primary Schools: Manorfield Primary and Nursery School 0.5 miles, Yattendon School 0.9 miles, Meath Green Junior School 1.0 miles

Secondary Schools: Oakwood School 1.4 miles, Cornfield



Transport Information

Train Stations: Horley 0.6 miles, Gatwick Airport 1.6 miles, Salfords 2.6 miles



Address

Church Road, Horley, Surrey, RH6



Directions

For directions to this property please contact us.



cubitt&west
Helping you move forwards

Call Horley Branch 01293 785338 ■ cubittandwest.co.uk



■ Legal advice should be taken to verify fixtures/fittings, planning, alterations and/or lease details ■ Appliances & services are untested, dimensions are approximate and floor plans are not to scale
■ Through a Homewise Home For Life Plan people aged 60+ can secure this property for up to 59% less, by purchasing a Lifetime Lease.



20810918/20240330/TP/SI