



Price
£300,000

Leasehold

2x  2x  1x 

**Russell Square, Russells
Crescent, Horley,
Surrey, RH6**

OVER 60?

Secure this property
for up to **59% less!**

cubitt&west
Helping you move forwards



Main features

- No chain
- Walking distance to train station and local amenities
- Beautifully presented and recently decorated throughout
- Outside terrace area
- Allocated parking

Accommodation

FIRST FLOOR

Hallway

Kitchen/Living & Dining Room: 22'10 x 13'2 (6.96m x 4.02m)

Bedroom 1: 15'7 x 9'2 (4.75m x 2.80m)

En suite: 7'0 x 6'0 (2.14m x 1.83m)

Bedroom 2: 11'10 x 11'2 (3.61m x 3.41m)

Bathroom: 6'11 x 6'10 (2.11m x 2.08m)

OUTSIDE

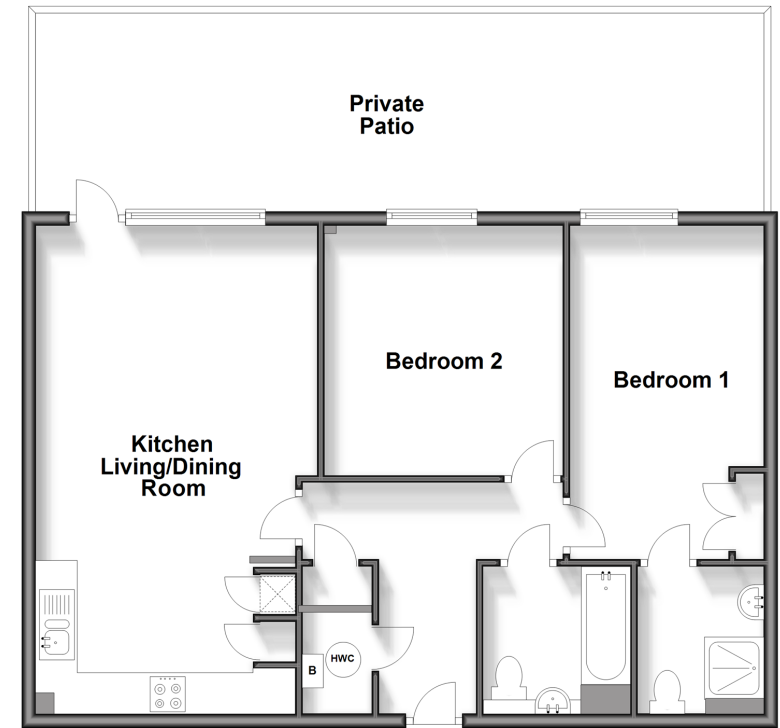
Terrace

Car Park

Communal Gardens

First Floor

Approx. 72.1 sq. metres (775.7 sq. feet)



Call Horley - 01293 785338 ■ cubittandwest.co.uk

- Legal advice should be taken to verify fixtures/fittings, planning, alterations and/or lease details
- Appliances & services are untested, dimensions are approximate and floor plans are not to scale
- Through a Homewise Home For Life Plan people aged 60+ can secure this property for up to 59% less, by purchasing a Lifetime Lease.



20810958/20240504/TP/AG