



Price

£475,000

Freehold

3x  1x  2x 

**Crawley Road, Horsham,
West Sussex, RH12**

OVER 60?

You could get up to
59% off the price!*

cubitt&west
Helping you move forwards



Main features

- Lovely property with character features
- Good size gardens
- Large loft room with potential to convert, subject to necessary consents
- Plenty of parking
- Fantastic location

Accommodation

SPLIT LEVEL GROUND FLOOR

Entrance Hall

Dining Room: 11'8 x 9'6 (3.56m x 2.90m)

Kitchen: 11'1 at widest point x 6'8 at widest point (3.38m x 2.03m)

Lean To

Lounge: 14'6 at widest point x 12'1 up to chimney breast (4.42m x 3.69m)

Inner Hall

Pantry: 5'8 x 3'3 (1.73m x 0.99m)

Study: 12'3 x 6'5 (3.74m x 1.96m)

SPLIT LEVEL FIRST FLOOR

Landing

Bedroom 2: 12'0 up to door well x 8'6 up to chimney breast (3.66m x 2.59m)

Bedroom 3: 12'2 at widest point x 6'6 at widest point (3.71m x 1.98m)

Bedroom 1: 12'3 up to chimney breast x 12'1 at widest point (3.74m x 3.69m)

Bathroom: 8'8 x 6'2 (2.64m x 1.88m)

SECOND FLOOR

Boarded Loft Room: 19'9 x 10'1 (6.02m x 3.08m)

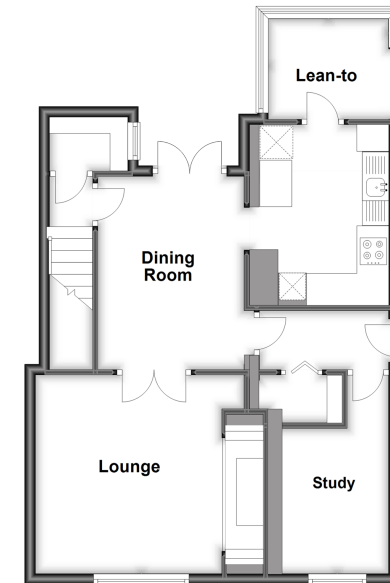
OUTSIDE

Off Road Parking

Front & Rear Gardens

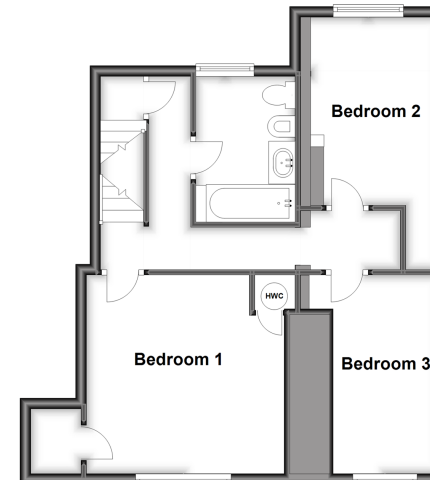
Split Level Ground Floor

Approx. 56.9 sq. metres (612.9 sq. feet)



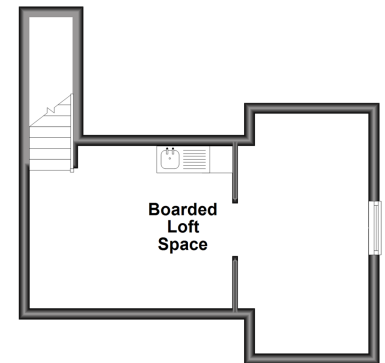
Split Level First Floor

Approx. 52.5 sq. metres (565.0 sq. feet)



Loft

Approx. 0.0 sq. metres (0.0 sq. feet)



Call Horsham - 01403 269268 ■ cubittandwest.co.uk

- Legal advice should be taken to verify fixtures/fittings, planning, alterations and/or lease details
- Appliances & services are untested, dimensions are approximate and floor plans are not to scale
- Our Homewise partnership offer a 'Home for Life' plan to buyers over 60, granting a lifetime lease for your protection and reducing the purchase price by up to 59%



20902109/20220702/JM/DW