



OVER 60?

Secure this property
for up to **59% less!**

Price
£500,000

Freehold

4x  1x  2x 

**Depot Road, Horsham,
West Sussex, RH13**

cubitt&west
Helping you move forwards



Main features

- Great family home
- Off road parking available for a small car
- Fantastic location within easy walk to station, town centre, schools and park
- Beautifully renovated, character period home
- First time to market for 57 years!

Accommodation

SPLIT LEVEL GROUND FLOOR

Lounge: 12'7 at widest point x 12'4 at widest point (3.84m x 3.76m)

Dining Area: 13'2 x 10'9 (4.02m x 3.28m)

Kitchen: 9'11 x 7'8 (3.02m x 2.34m)

Utility Room: 8'10 at widest point (2.69m) x 8'3 (2.52m) narrowing to 3'11 (1.19m)

Cloakroom

SPLIT LEVEL FIRST FLOOR

Landing

Bedroom 1: 13'3 at widest point x 13'2 at widest point (4.04m x 4.02m)

Bedroom 2: 10'2 x 7'8 (3.10m x 2.34m)

Wet Room: 7'11 x 7'1 (2.41m x 2.16m)

SECOND FLOOR

Landing

Bedroom 3: 11'7 at widest point x 10'8 at widest point (3.53m x 3.25m)

Bedroom 4: 11'9 (3.58m) x 8'9 (2.67m) narrowing to 5'6 (1.68m)

Eaves Storage

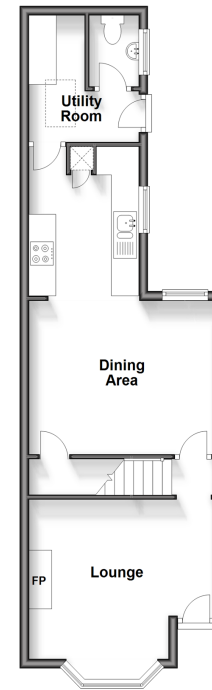
OUTSIDE

Off Road Parking

Front and Rear Garden

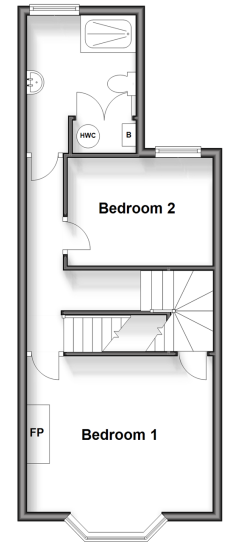
Split Level Ground Floor

Approx. 45.1 sq. metres (485.2 sq. feet)



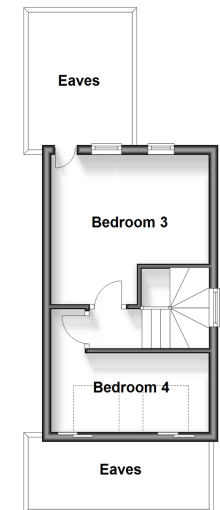
Split Level First Floor

Approx. 38.3 sq. metres (412.1 sq. feet)



Second Floor

Approx. 20.6 sq. metres (221.4 sq. feet)



Call Horsham - 01403 269268 ■ cubittandwest.co.uk

- Legal advice should be taken to verify fixtures/fittings, planning, alterations and/or lease details
- Appliances & services are untested, dimensions are approximate and floor plans are not to scale
- Through a Homewise Home For Life Plan people aged 60+ can secure this property for up to 59% less, by purchasing a Lifetime Lease.



20906935/20240321/SEH/KEP