

OVER 60?

Secure this property
for up to **59% less!**



Price

£500,000

Leasehold

3x  1x  2x 

Denne Park, Horsham, West Sussex, RH13

cubitt&west
Helping you move forwards



Main features

- **Quirky and unique period conversion**
- **Set in beautiful, peaceful parkland with feeling of space and escape**
- **Convenience of a garage and allocated parking**
- **Secure and well maintained**
- **Spacious rooms with plenty of character**
- **Close to golf course and within a short drive to Horsham town centre and amenities**

Accommodation

FIRST FLOOR

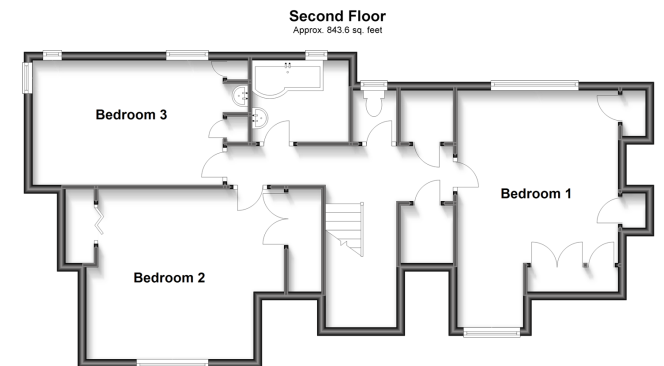
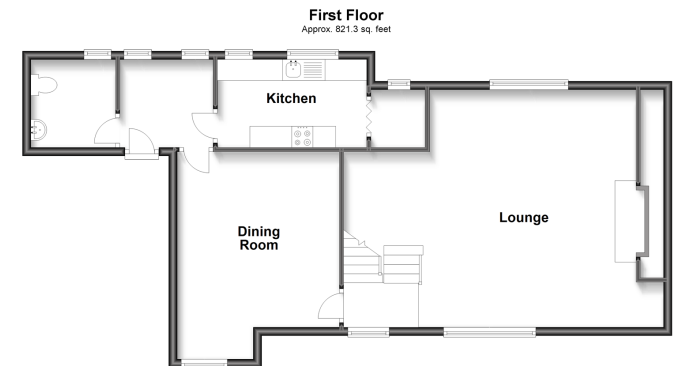
Entrance Hall: 7'3 x 6'11 (2.21m x 2.11m)
 Cloakroom
 Kitchen: 11'6 x 6'11 (3.51m x 2.11m)
 Dining Room: 16'2 (4.93m) narrowing to 13'7 (4.14m) x 12'7 (3.84m)
 Lounge: 19'6 at widest point x 17'10 at widest point (5.95m x 5.44m)

SECOND FLOOR

Landing
 Bedroom 1: 13'11 at widest point x 12'8 at widest point (4.24m x 3.86m)
 Bedroom 2: 16'3 up to fitted wardrobes x 10'5 at widest point (4.96m x 3.18m)
 Bedroom 3: 14'8 up to fitted wardrobes x 13'3 (4.47m x 4.04m)
 Family Bathroom: 7'3 x 6'9 (2.21m x 2.06m)
 Separate Toilet

OUTSIDE

Communal Gardens
 Garage
 Allocated Parking Space



Call Horsham - 01403 269268 ■ cubittandwest.co.uk

- If buying to let, the energy rating will need to be improved to at least 'E' rating before you can let the property
- Appliances & services are untested, dimensions are approximate and floor plans are not to scale

- Legal advice should be taken to verify fixtures/fittings, planning, alterations and/or lease details
- Through a Homewise Home For Life Plan people aged 60+ can secure this property for up to 59% less, by purchasing a Lifetime Lease.