



Price
£400,000

Freehold

3x  1x  1x 

**Lambs Farm Close,
Horsham, West Sussex,
RH12**

OVER 60?

Secure this property
for up to **59% less!**

cubitt&west
Helping you move forwards



Main features

- Quiet cul de sac position, short walk from local shops and 98 bus route
- Beautiful modern and contemporary kitchen/dining room
- Garage, car port and driveway parking
- Quality bathroom
- Great for commuting with bypass and Littlehaven station nearby

Accommodation

GROUND FLOOR

Lounge: 16'0 x 11'6 (4.88m x 3.51m)

Kitchen/Dining Room: 16'0 x 9'8 (4.88m x 2.95m)

FIRST FLOOR

Landing

Bedroom 1: 11'8 up to fitted cupboard x 9'2 (3.56m x 2.80m)

Bedroom 2: 9'9 x 9'2 (2.97m x 2.80m)

Bedroom 3: 8'7 x 6'7 (2.62m x 2.01m)

Bathroom: 6'7 x 6'5 (2.01m x 1.96m)

OUTSIDE

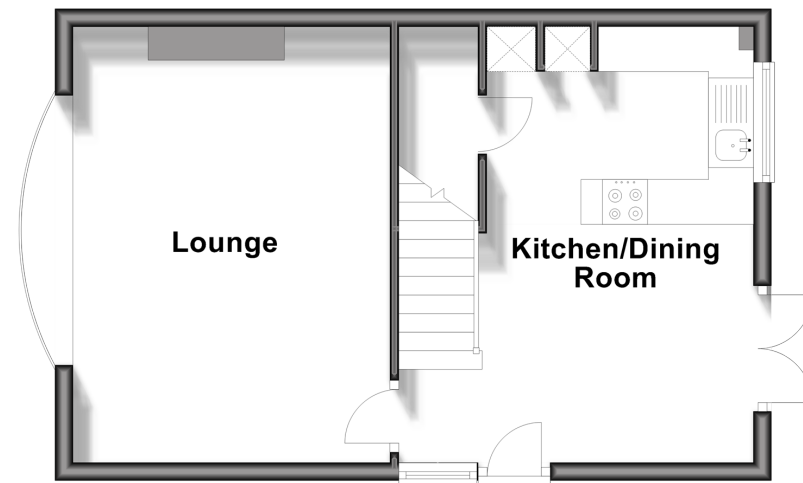
Front & Rear Garden

Garage: 19'3 x 8'9 (5.87m x 2.67m)

Car Port & Driveway

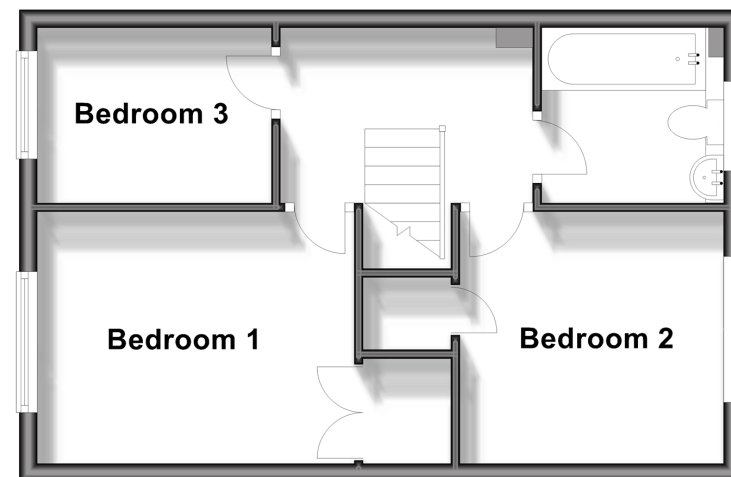
Ground Floor

Approx. 37.1 sq. metres (399.8 sq. feet)



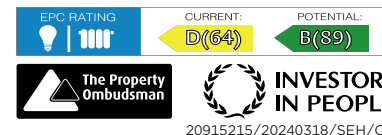
First Floor

Approx. 37.1 sq. metres (399.9 sq. feet)



Call Horsham - 01403 269268 ■ cubittandwest.co.uk

- Legal advice should be taken to verify fixtures/fittings, planning, alterations and/or lease details
- Appliances & services are untested, dimensions are approximate and floor plans are not to scale
- Through a Homewise Home For Life Plan people aged 60+ can secure this property for up to 59% less, by purchasing a Lifetime Lease.



20915215/20240318/SEH/CB