

OVER 60?

Secure this property
for up to **59% less!**



Price

£650,000

Freehold

4x  3x  1x 

Heydon Way, Horsham, West Sussex, RH12

cubitt & west
Helping you move forwards

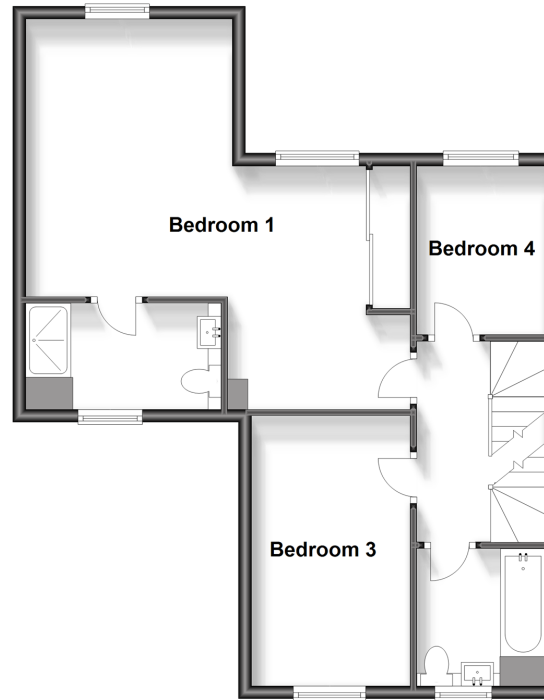
Ground Floor

Approx. 93.9 sq. metres (1011.2 sq. feet)



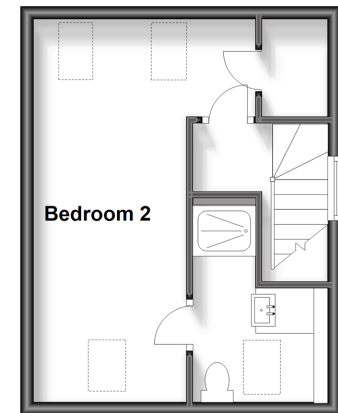
First Floor

Approx. 57.1 sq. metres (615.1 sq. feet)



Second Floor

Approx. 27.3 sq. metres (293.6 sq. feet)



Accommodation

GROUND FLOOR

Entrance Hall

Cloakroom

Study: 11'4 x 6'8 (3.46m x 2.03m)

Lounge: 22'5 at widest point x 15'7 at widest point (6.84m x 4.75m)

Kitchen/Dining Area: 19'11 at widest point x 10'0 at widest point (6.07m x 3.05m)

FIRST FLOOR

Landing

Bathroom: 6'11 at widest point x 5'11 at widest point (2.11m x 1.80m)

Bedroom 3: 13'10 x 8'3 (4.22m x 2.52m)

Bedroom 4: 8'9 x 6'11 (2.67m x 2.11m)

Bedroom 1: (L-shaped) 14'2 x 10'0 (4.32m x 3.05m) plus 12'7 x 9'4 (3.84m x 2.85m)

En Suite Shower Room: 8'11 x 5'6 (2.72m x 1.68m)

SECOND FLOOR

Landing

Bedroom 2: 19'6 at widest point x 8'5 at widest point (5.95m x 2.57m)

En Suite Shower Room: 6'9 at widest point x 5'10 at widest point (2.06m x 1.78m)

OUTSIDE

Summer House: 13'5 x 6'10 (4.09m x 2.08m)

Garage: 20'0 x 10'9 (6.10m x 3.28m)

Utility: 10'2 x 4'11 (3.10m x 1.50m)

Front & Rear Gardens

Off Road Parking



Main features

- An extended and much improved Wakeford by Countryside Homes
- Stunning handmade bespoke kitchen/diner
- Useful separate study for possible home office/playroom
- Quiet cul de sac position with lovely outlook
- Good size garage and plentiful parking
- Lovely size main bedroom with dressing area and en-suite



Nearest Schools

Primary Schools: Shelley Primary 0.4 miles, .
Secondary Schools: Tanbridge House School 0.7 miles
Further Education: College of Richard Collyer, The 1.9 miles



Transport Information

Train Stations: Christs Hospital 1.0 miles, Horsham 2.0 miles, Warnham 2.4 miles



Address

Heydon Way, Horsham, West Sussex, RH12



Directions

For directions to this property please contact us.



cubitt&west
Helping you move forwards

Call Horsham Branch 01403 269268 ■ cubittandwest.co.uk



■ Legal advice should be taken to verify fixtures/fittings, planning, alterations and/or lease details ■ Appliances & services are untested, dimensions are approximate and floor plans are not to scale
■ Through a Homewise Home For Life Plan people aged 60+ can secure this property for up to 59% less, by purchasing a Lifetime Lease.



20915246/20230807/KEP/CB