



**Price**  
**£290,000**

**Leasehold**

2x  2x  1x 

**Bricklayer Lane,  
Faygate, Horsham, West  
Sussex, RH12**

**OVER 60?**

You could get up to  
**59% off** the price!\*



**Video Tour available**

**cubitt&west**  
Helping you move forwards





## Main features

- Situated on the edge of the development with open countryside nearby
- Located between Crawley & Horsham with easy access to M23 and Gatwick
- Enjoy private outside space
- Ready to move into with no onward chain

## Accommodation

### GROUND FLOOR

#### Entrance Hall

**Lounge/Kitchen/Diner:** 19'9 x 13'5 (6.02m x 4.09m)

**Bedroom 2:** 10'11 into door well x 10'6 (3.33m x 3.20m)

**Bathroom:** 7'4 x 5'7 (2.24m x 1.70m)

**Bedroom 1:** 13'6 at widest point x 10'11 up to fitted wardrobes (4.12m x 3.33m)

**En Suite Shower Room:** 7'8 x 4'8 (2.34m x 1.42m)

### OUTSIDE

#### Patio Area

#### Allocated Parking Space

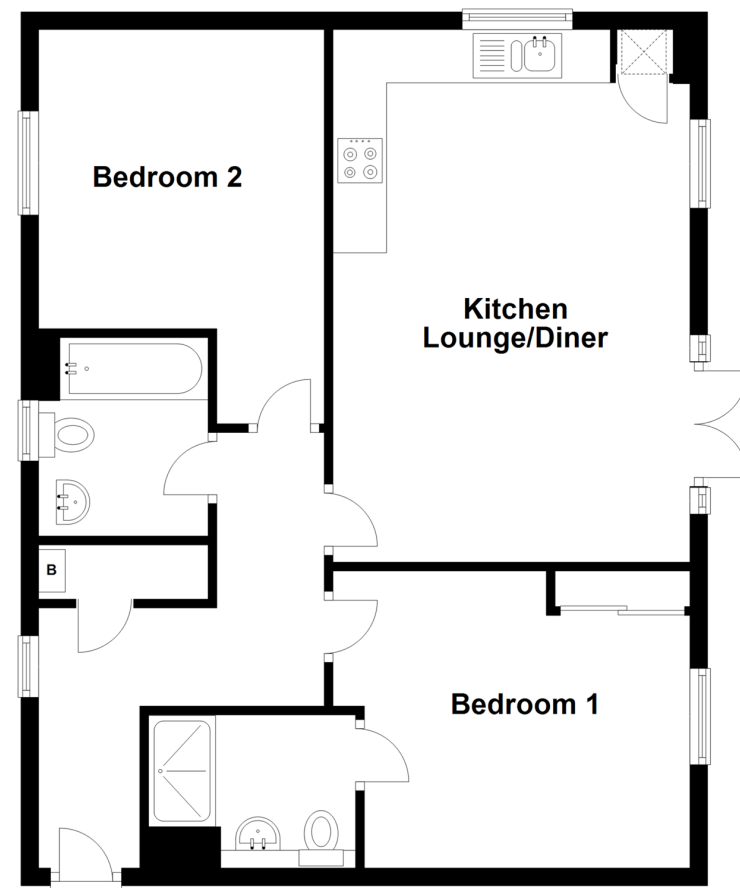
#### Communal Garden

**Call Horsham - 01403 269268 ■ [cubittandwest.co.uk](http://cubittandwest.co.uk)**

- Legal advice should be taken to verify fixtures/fittings, planning, alterations and/or lease details
- Appliances & services are untested, dimensions are approximate and floor plans are not to scale
- Our Homewise partnership offer a 'Home for Life' plan to buyers over 60, granting a lifetime lease for your protection and reducing the purchase price by up to 59%

## Ground Floor

Approx. 69.1 sq. metres (744.0 sq. feet)



20916483/20220425/SEH/CB