



OVER 60?

Secure this property
for up to **59% less!**

Price

£460,000

Freehold

3x  2x  1x 

**Low Weald Lane,
Broadbridge Heath,
Horsham, West Sussex,
RH12**

cubitt&west
Helping you move forwards



Main features

- Modern home close to park, countryside and schools
- Convenience of 2 carport parking spaces
- Leisure Centre, supermarket and transport links nearby
- Low maintenance landscaped garden
- Separate lounge and kitchen/dining room, ideal for a busy household

Accommodation

GROUND FLOOR

Entrance Hall

Cloakroom

Lounge: 18'3 x 10'2 (5.57m x 3.10m)

Kitchen/Dining Room: 16'11 at widest point x 11'2 at widest point (5.16m x 3.41m)

FIRST FLOOR

Landing

Bedroom 3: 10'0 x 7'1 (3.05m x 2.16m)

Bedroom 1: 18'4 (5.59m) narrowing to 11'2 (3.41m) x 9'6 at widest point (2.90m)

Bedroom 2: 10'11 x 9'6 (3.33m x 2.90m)

En Suite Shower Room: 6'10 x 4'9 (2.08m x 1.45m)

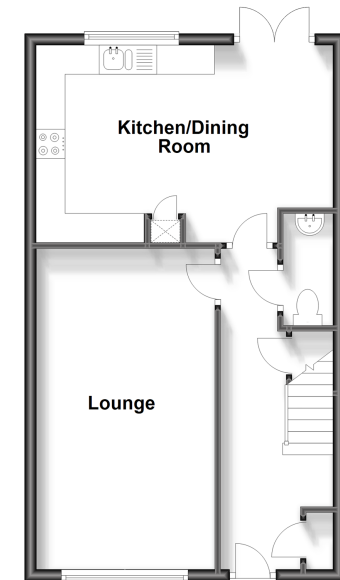
Bathroom: 7'2 x 6'4 (2.19m x 1.93m)

OUTSIDE

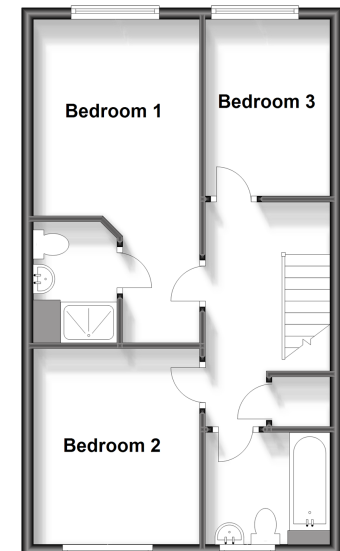
Front & Rear Garden

2 Allocated Parking Spaces

Ground Floor
Approx. 46.2 sq. metres (497.8 sq. feet)



First Floor
Approx. 46.2 sq. metres (497.8 sq. feet)



Call Horsham - 01403 269268 ■ cubittandwest.co.uk

- Legal advice should be taken to verify fixtures/fittings, planning, alterations and/or lease details
- Appliances & services are untested, dimensions are approximate and floor plans are not to scale
- Through a Homewise Home For Life Plan people aged 60+ can secure this property for up to 59% less, by purchasing a Lifetime Lease.



20916757/20230512/SEH/CB