

OVER 60?

Secure this property
for up to **59% less!**



Price

£240,000

Leasehold

2x  2x  1x 

Osterley House, Godwin Way, Horsham,
West Sussex, RH13

cubitt&west
Helping you move forwards



Main features

- **Fantastic property just a short walk to local shops**
- **Good size lounge/dining room, perfect for entertaining**
- **Near to the 98 bus route**
- **Convenience of an allocated parking space outside your kitchen window**
- **Luxury of en suite shower room to main bedroom**

Accommodation

GROUND FLOOR

Entrance Hall

Lounge/Dining Room: 16'5 at widest point (5.01m) x 11'4 at widest point (3.46m) narrowing to 10'0 (3.05m)

Kitchen: 11'4 x 5'9 (3.46m x 1.75m)

Bathroom: 6'5 x 5'9 (1.96m x 1.75m)

Bedroom 2: 12'8 x 6'1 (3.86m x 1.86m)

Bedroom 1: 12'7 x 8'1 (3.84m x 2.47m)

En Suite Shower Room: 4'5 x 3'4 (1.35m x 1.02m)

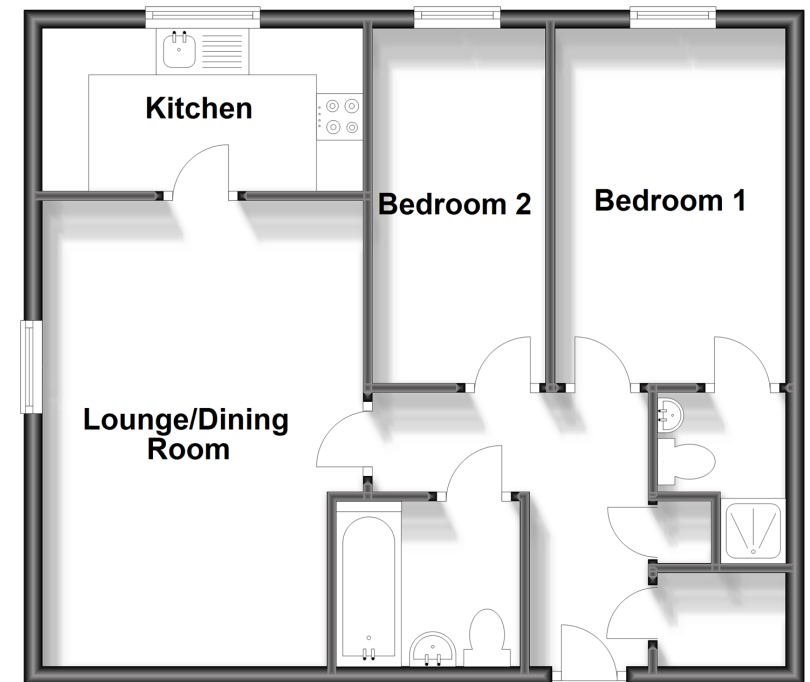
OUTSIDE

Allocated Parking

Communal Garden

Ground Floor

Approx. 55.0 sq. metres (591.6 sq. feet)



Call Horsham - 01403 269268 ■ cubittandwest.co.uk

■ Legal advice should be taken to verify fixtures/fittings, planning, alterations and/or lease details
 ■ Through a Homewise Home For Life Plan people aged 60+ can secure this property for up to 59% less, by purchasing a Lifetime Lease.

■ Appliances & services are untested, dimensions are approximate and floor plans are not to scale