



Price
£350,000

Freehold

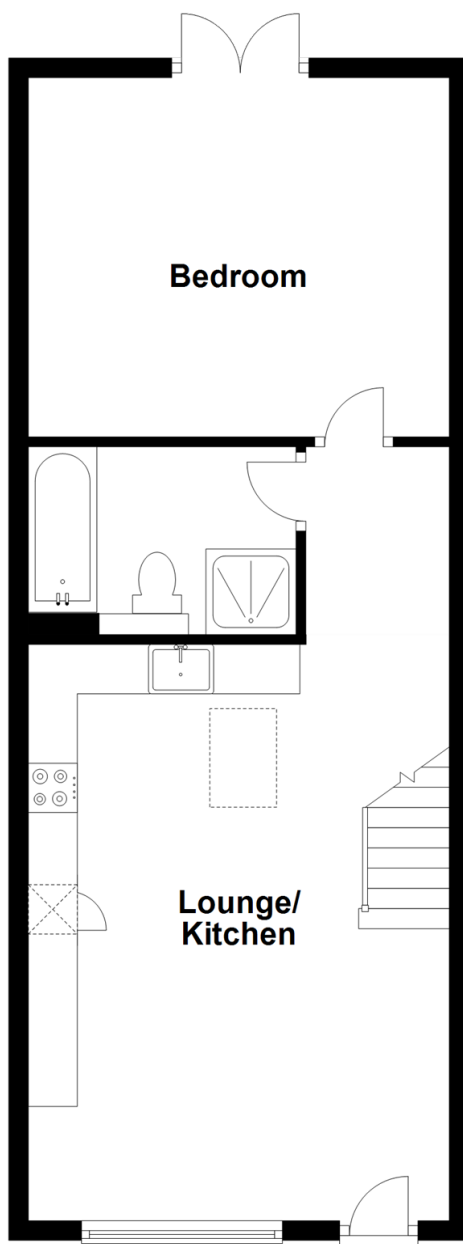
1x  1x  1x 

**Six Acre View, Capel
Road, Rusper, Horsham,
West Sussex, RH12**

cubitt&west
Helping you move forwards

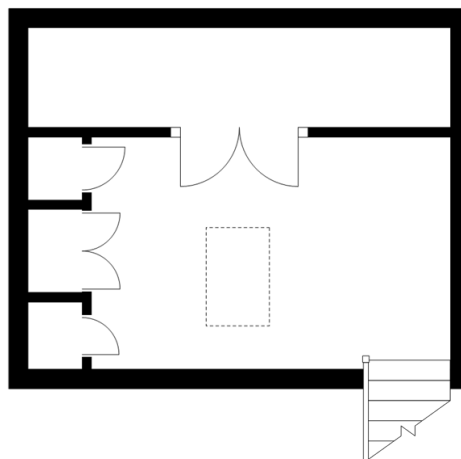
Ground Floor

Approx. 49.0 sq. metres (527.6 sq. feet)



Mezzanine

Approx. 14.9 sq. metres (160.3 sq. feet)



Accommodation

GROUND FLOOR

Lounge/Kitchen: 19'1 x 14'0 (5.82m x 4.27m)

Bathroom: 8'4 x 5'6 (2.54m x 1.68m)

Bedroom: 13'11 x 12'1 (4.24m x 3.69m)

MEZZANINE

Mezzanine Level: 12'4 x 6'7 (3.76m x 2.01m)

OUTSIDE

Rear Garden with Patio Area
Allocated Parking



Main features

- Located in a quiet and rural gated community just outside Rusper village
- Built to a great standard with a 10 year new build warranty and parking
- Open plan living with fantastic mezzanine level
- Deson kitchen with integrated appliances and quartz worktops
- Good size double bedroom with patio doors out to private rear garden and patio area



Nearest Schools

Primary Schools: Rusper Primary 1.1 miles, Scott Broadwood CofE Primary 2.0 miles, Holbrook Primary 2.7 miles
Secondary Schools: Ifield Community College 4.0 miles, Millais School 4.1 miles, Manor Green College 4.2 miles



Transport Information

Train Stations: Ockley 2.3 miles, Warnham 2.4 miles, Faygate 2.5 miles



Address

Six Acre View, Capel Road, Rusper, Horsham, West Sussex, RH12



Directions

For directions to this property please contact us.



cubitt&west
Helping you move forwards

Call Horsham Branch 01403 269268 ■ cubittandwest.co.uk



■ Legal advice should be taken to verify fixtures/fittings, planning, alterations and/or lease details ■ Appliances & services are untested, dimensions are approximate and floor plans are not to scale



20916987/20220815/SEH/CB