



**OVER 60?**

You could get up to  
**59% off** the price!\*

**Price**

**£215,000**

**Leasehold**

1x  1x  1x 

**Horsham Gates Two,  
North Street, Horsham,  
West Sussex, RH13**

**cubitt&west**  
Helping you move forwards



## Second Floor

Approx. 23.9 sq. metres (256.9 sq. feet)

## Main features

- Modern and with a great layout
- Perfect opportunity for first time buyers
- Town centre location, convenient for train station, Horsham Park
- Open plan contemporary living space, ideal for entertaining
- Juliette balcony gives you the sense of outside space

## Accommodation

### SECOND FLOOR

Entrance Hall

Lounge/Kitchen : 20'3 at widest point x 11'1 at widest point (6.18m x 3.38m)

Juliette Balcony

### THIRD FLOOR

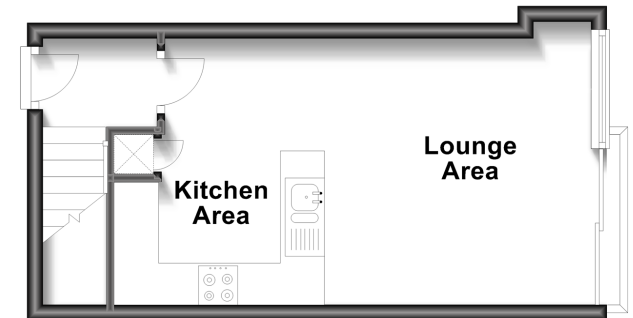
Landing

Bedroom : 11'10 at widest point x 9'6 at widest point (3.61m x 2.90m)

Bathroom: 11'3 at widest point x 10'8 at widest point (3.43m x 3.25m)

### OUTSIDE

Resident's Parking Space



## Third Floor

Approx. 22.2 sq. metres (238.7 sq. feet)



**Call Horsham - 01403 269268 ■ cubittandwest.co.uk**

■ Legal advice should be taken to verify fixtures/fittings, planning, alterations and/or lease details  
 ■ Our Homewise partnership offer a 'Home for Life' plan to buyers over 60, granting a lifetime lease for your protection and reducing the purchase price by up to 59%

■ Appliances & services are untested, dimensions are approximate and floor plans are not to scale