



Price

£200,000

Leasehold

1x  1x  1x 

**Sussex House, North Street, Horsham,
West Sussex, RH12**

cubitt&west
Helping you move forwards



Main features

- Close to station, park, leisure centre and cafe
- Within walking distance to the town centre
- Mood lighting and secure entry systems
- Optional parking spaces
- 10 year new build warranty included
- Modern kitchen with integrated appliances
- Electric car charging spaces
- *Internal images shown are of the show home for illustrative purposes only. Layouts may vary

Accommodation

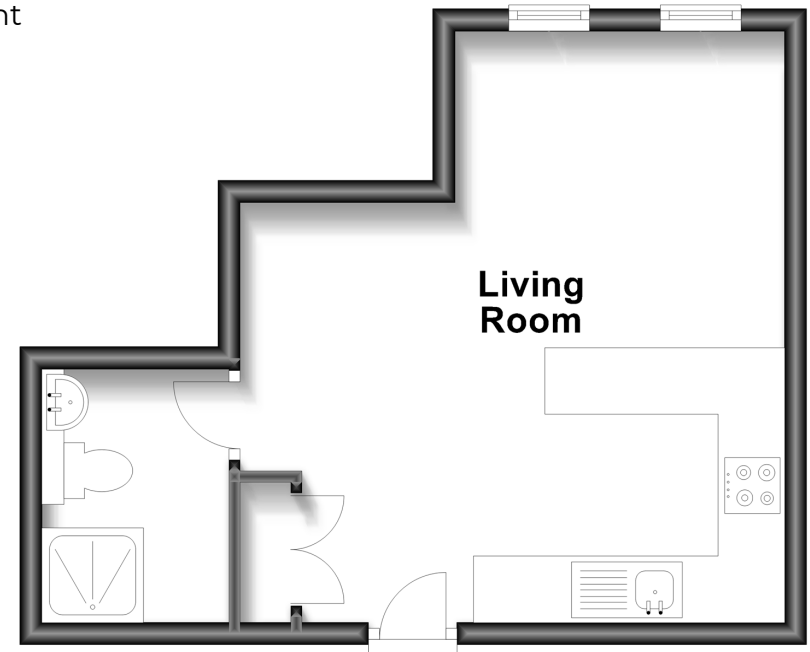
THIRD FLOOR

Living Room: 17'0 at widest point x 15'6 at widest point (5.19m x 4.73m)

Shower Room: 7'4 x 5'9 (2.24m x 1.75m)

Third Floor

Approx. 27.2 sq. metres (292.3 sq. feet)



Call Horsham - 01403 269268 ■ cubittandwest.co.uk

■ Legal advice should be taken to verify fixtures/fittings, planning, alterations and/or lease details

■ Appliances & services are untested, dimensions are approximate and floor plans are not to scale



20917168/20230524/SEH/CB