



Price
£260,000

Leasehold

1x  1x  1x 

**Sussex House, North
Street, Horsham, West
Sussex, RH12**

cubitt&west
Helping you move forwards



Main features

- Close to station, park, leisure centre and cafe
- Within walking distance to the town centre
- Mood lighting and secure entry systems
- Optional parking spaces
- 10 year new build warranty included
- Modern kitchen with integrated appliances
- Electric car charging spaces
- *Internal images shown are of the show home for illustrative purposes only. Layouts may vary

Accommodation

SECOND FLOOR

Kitchen Area: 10'1 x 9'7 (3.08m x 2.92m)

Lounge/Dining Area: 17'4 x 9'6 (5.29m x 2.90m)

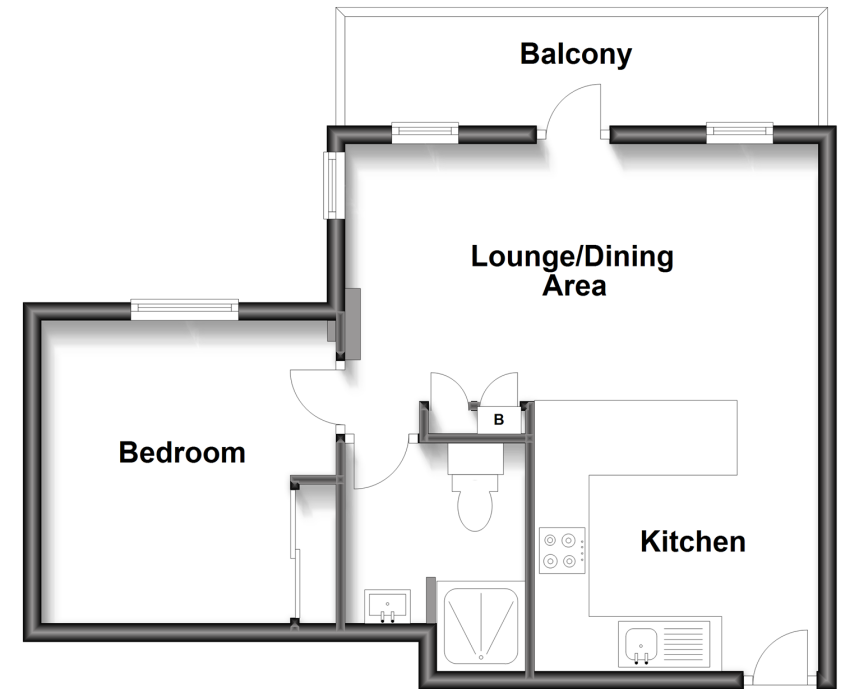
Balcony

Shower Room: 6'4 x 6'3 (1.93m x 1.91m)

Bedroom: 11'2 x 10'9 into fitted wardrobes (3.41m x 3.28m)

Second Floor

Approx. 40.4 sq. metres (434.8 sq. feet)



Call Horsham - 01403 269268 ■ cubittandwest.co.uk

■ Legal advice should be taken to verify fixtures/fittings, planning, alterations and/or lease details

■ Appliances & services are untested, dimensions are approximate and floor plans are not to scale



20917215/20230524/SEH/CB