



**Price**  
**£195,000**

**Leasehold**

1x  1x  1x 

**Sussex House, North  
Street, Horsham, West  
Sussex, RH12**

**cubitt&west**  
Helping you move forwards





## Main features

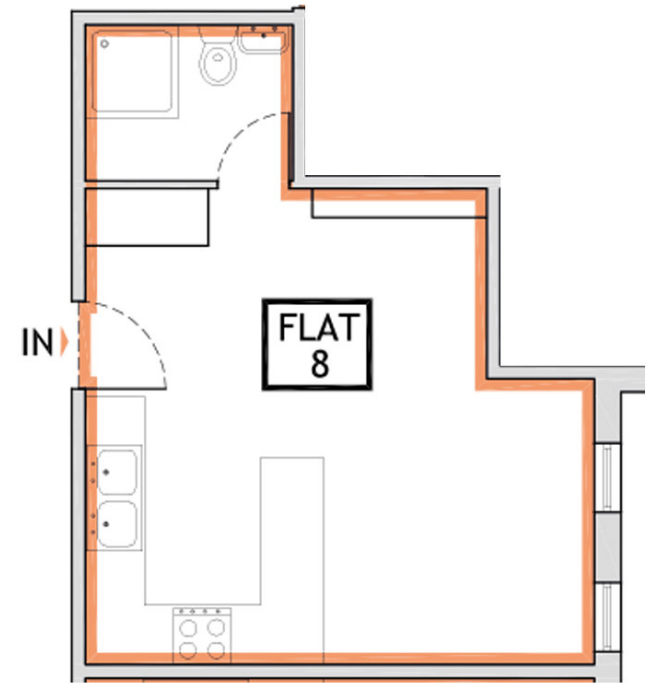
- Close to station, park, leisure centre and cafe
- Within walking distance to the town centre
- Mood lighting and secure entry systems
- Optional parking spaces
- 10 year new build warranty included
- Modern kitchen with integrated appliances
- Electric car charging spaces
- \*Internal images shown are of the show home for illustrative purposes only. Layouts may vary

## Accommodation

### FIRST FLOOR

Kitchen/Living Space: 17'4 x 16'1 (5.29m x 4.91m)

Shower Room: 7'7 x 5'6 (2.31m x 1.68m)



Call Horsham - 01403 269268 ■ [cubittandwest.co.uk](http://cubittandwest.co.uk)

■ Legal advice should be taken to verify fixtures/fittings, planning, alterations and/or lease details

■ Appliances & services are untested, dimensions are approximate and floor plans are not to scale