

OVER 60?

Secure this property
for up to **59% less!**



Price

£325,000

Leasehold

3x  2x  1x 

Prewetts Mill Apartments, Mill Bay Lane,
Horsham, West Sussex, RH12

cubitt&west
Helping you move forwards



Main features

- Stunning well presented property
- Fabulous large sunny balcony to enjoy private outside space
- Convenience of allocated parking
- Town centre location near to the river walk and Denne Hill
- Versatile lay out

Accommodation

SECOND FLOOR

Entrance Hall
 Cloakroom: 8'0 x 3'3 (2.44m x 0.99m)
 Lounge: 14'4 x 9'0 (4.37m x 2.75m)
 Balcony
 Kitchen: 10'9 x 9'11 (3.28m x 3.02m)

THIRD FLOOR

Landing
 Bedroom 2: 9'10 x 8'11 (3.00m x 2.72m)
 Bedroom 1: 9'2 at widest point x 8'4 at widest point (2.80m x 2.54m)
 En Suite Shower Room: 4'1 x 2'7 (1.25m x 0.79m)

SPLIT LEVEL THIRD FLOOR

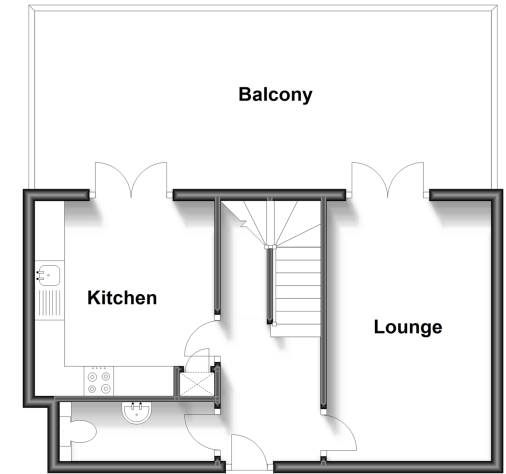
Landing
 Bedroom 3: 9'9 x 8'1 (2.97m x 2.47m)
 Shower Room: 6'7 x 6'6 (2.01m x 1.98m)

OUTSIDE

Allocated Parking

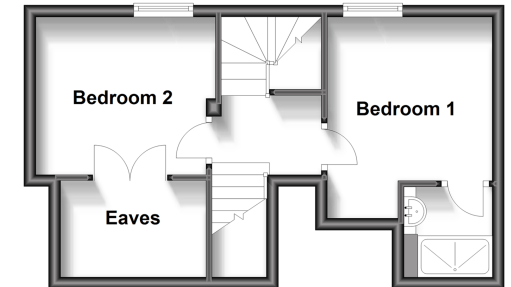
Second Floor

Approx. 33.2 sq. metres (357.5 sq. feet)



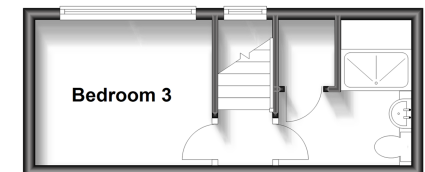
Third Floor

Approx. 29.9 sq. metres (322.0 sq. feet)



Split Level Third Floor

Approx. 15.5 sq. metres (167.2 sq. feet)



Call Horsham - 01403 269268 ■ cubittandwest.co.uk

- Legal advice should be taken to verify fixtures/fittings, planning, alterations and/or lease details
- Appliances & services are untested, dimensions are approximate and floor plans are not to scale
- Through a Homewise Home For Life Plan people aged 60+ can secure this property for up to 59% less, by purchasing a Lifetime Lease.



20917243/20231128/SEH/CB