

**OVER 60?**

Secure this property  
for up to **59% less!**



**Price**

**£290,000**

**Leasehold**

2x  1x  1x 

The Comptons, Comptons Lane, Horsham,  
West Sussex, RH13

**cubitt&west**  
Helping you move forwards





## Main features

- Rarely available, direct access to communal gardens
- Convenience of underground parking
- Walking distance to Horsham train station and Leechpool Woods
- Security gate and entry system
- With no onward chain the property is ready to move in to

## Accommodation

### GROUND FLOOR

#### Entrance Hall

Bedroom 1: 13'9 into fitted wardrobes x 8'7 at widest point (4.19m x 2.62m)

#### En Suite Shower Room

Bedroom 2: 12'0 at widest point x 8'6 at widest point (3.66m x 2.59m)

Bathroom: 8'1 x 5'3 (2.47m x 1.60m)

Lounge: 14'9 x 14'4 (4.50m x 4.37m)

Kitchen: 10'1 x 6'6 (3.08m x 1.98m)

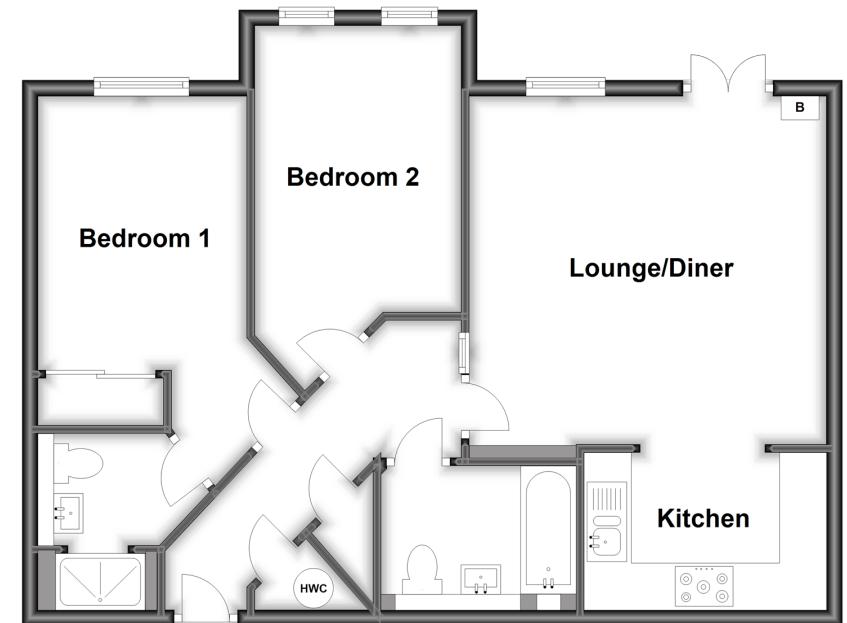
### OUTSIDE

Allocated Parking Space

Communal Gardens

### Ground Floor

Approx. 66.6 sq. metres (717.4 sq. feet)



**Call Horsham - 01403 269268 ■ [cubittandwest.co.uk](http://cubittandwest.co.uk)**

- Legal advice should be taken to verify fixtures/fittings, planning, alterations and/or lease details
- Appliances & services are untested, dimensions are approximate and floor plans are not to scale
- Through a Homewise Home For Life Plan people aged 60+ can secure this property for up to 59% less, by purchasing a Lifetime Lease.



20917248/20230626/CB/CB