



Price
£535,000

Freehold

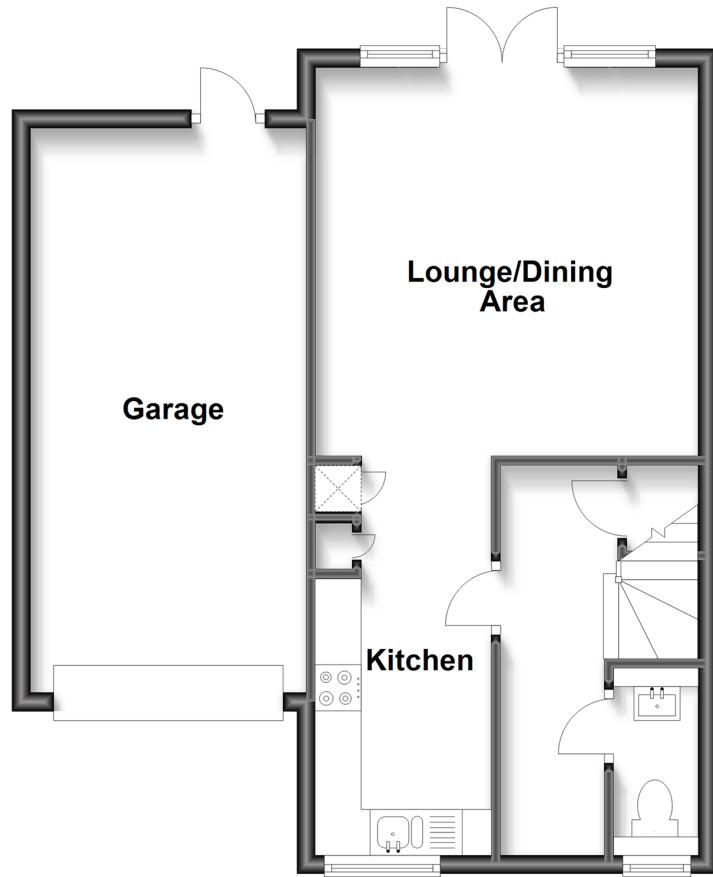
3x  3x  1x 

**Tern Avenue, Horsham,
West Sussex, RH12**

cubitt&west
Helping you move forwards

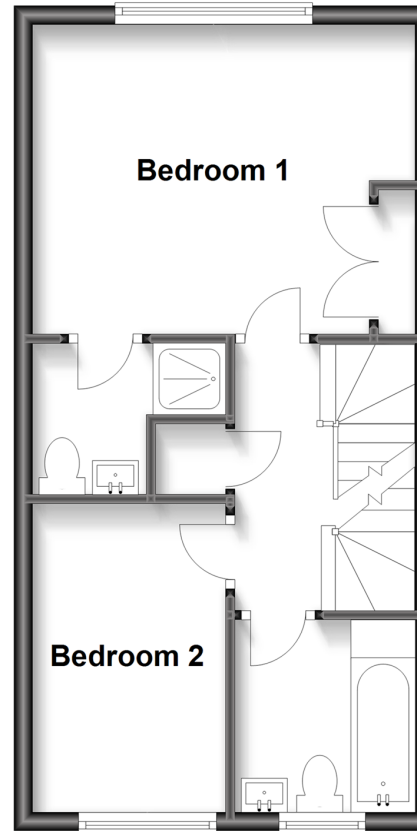
Ground Floor

Approx. 54.7 sq. metres (588.3 sq. feet)



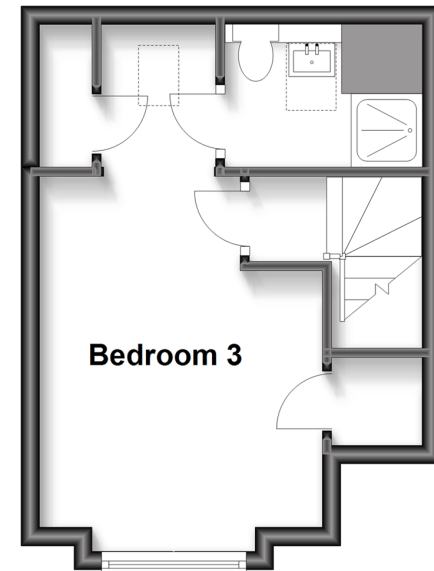
First Floor

Approx. 35.6 sq. metres (383.7 sq. feet)



Second Floor

Approx. 22.3 sq. metres (239.7 sq. feet)



Accommodation

GROUND FLOOR

Entrance Hall

Cloakroom

Kitchen: 14'0 x 6'3 (4.27m x 1.91m)

Lounge/Dining Area: 14'0 x 13'7 (4.27m x 4.14m)

FIRST FLOOR

Landing

Bedroom 1: 13'9 at widest point x 11'0 at widest point (4.19m x 3.36m)

En Suite Shower Room: 6'10 x 4'9 (2.08m x 1.45m)

Bathroom: 6'5 x 6'1 (1.96m x 1.86m)

Bedroom 2: 10'10 x 6'9 (3.30m x 2.06m)

SECOND FLOOR

Landing

Bedroom 3: 13'4 at widest point x 10'0 at widest point (4.07m x 3.05m) narrowing to 4'0 x 5'5 (1.22m x 1.65m)

En Suite Shower Room: 7'1 x 4'4 (2.16m x 1.32m)

OUTSIDE

Front & Rear Gardens

Integrated Garage: 20'1 x 9'10 (6.13m x 3.00m)

Driveway



Main features

- Modern family home
- Within walking distance of Littlehaven train station
- Convenience of a private driveway and garage
- Well presented
- Low maintenance rear garden



Nearest Schools

Primary Schools: North Heath Community Primary 0.3 miles, Holbrook Primary 0.4 miles, All Saints CofE Primary 0.4 miles
Secondary Schools: Millais School 1.1 miles, Forest School, The 1.3 miles, Queen Elizabeth II Silver Jubilee



Transport Information

Train Stations: Littlehaven 0.1 miles, Horsham 1.0 miles, Warnham 1.2 miles



Address

Tern Avenue, Horsham, West Sussex, RH12



Directions

For directions to this property please contact us.



cubitt&west
Helping you move forwards

Call Horsham Branch 01403 269268 ■ cubittandwest.co.uk



■ Legal advice should be taken to verify fixtures/fittings, planning, alterations and/or lease details ■ Appliances & services are untested, dimensions are approximate and floor plans are not to scale



20917262/20230516/SEH/CB