



Price
£375,000

Freehold

2x  1x  1x 

**Cheesmer Way,
Broadbridge Heath,
Horsham, West Sussex,
RH12**

cubitt&west
Helping you move forwards



Main features

- 'The Heydon' by Countryside Homes
- Good size open plan living
- Convenience of off road parking
- Great location with easy main road access to Gatwick, Surrey and the South Coast
- Low maintenance sunny aspect courtyard garden

Accommodation

GROUND FLOOR

Entrance Hall
Cloakroom
Kitchen: 10'11 x 6'4 (3.33m x 1.93m)
Lounge/Dining Area: 23'1 at widest point x 14'5 at widest point (7.04m x 4.40m)

FIRST FLOOR

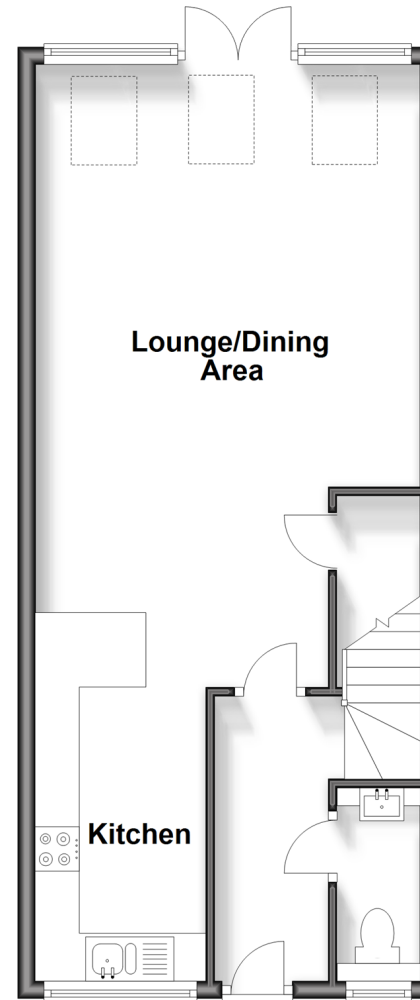
Landing
Bedroom 1: 14'5 into fitted wardrobes x 8'9 (4.40m x 2.67m)
Bathroom: 7'0 x 5'6 (2.14m x 1.68m)
Bedroom 2: 14'5 x 10'1 (4.40m x 3.08m)

OUTSIDE

Front & Rear Garden
Off Road Parking

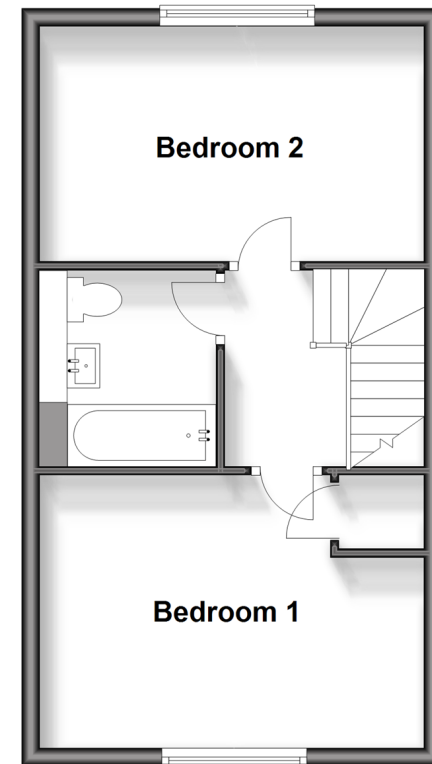
Ground Floor

Approx. 45.1 sq. metres (485.9 sq. feet)



First Floor

Approx. 35.6 sq. metres (382.8 sq. feet)



Call Horsham - 01403 269268 ■ cubittandwest.co.uk

- Legal advice should be taken to verify fixtures/fittings, planning, alterations and/or lease details
- Appliances & services are untested, dimensions are approximate and floor plans are not to scale



20917296/20231211/SEH/CB