



Price

£210,000

Leasehold

1x  1x  1x 

**Horsham Gates, North
Street, Horsham, West
Sussex, RH13**

OVER 60?

Secure this property
for up to **59% less!**

cubitt&west
Helping you move forwards



Main features

- Located close to Horsham town centre and train station
- Modern lifestyle with open plan living space
- Balcony for outside space
- Convenience of resident's permit parking
- Great for 'first-time buyers' and a 'buy-to-let' investment

Accommodation

UPPER GROUND FLOOR

Kitchen/Living Area: 19'7 at widest point (5.97m) x 10'8 at widest point (3.25m) narrowing to 8'8 (2.64m)

Balcony

Bedroom : 10'9 up to fitted wardrobes x 8'9 (3.28m x 2.67m)

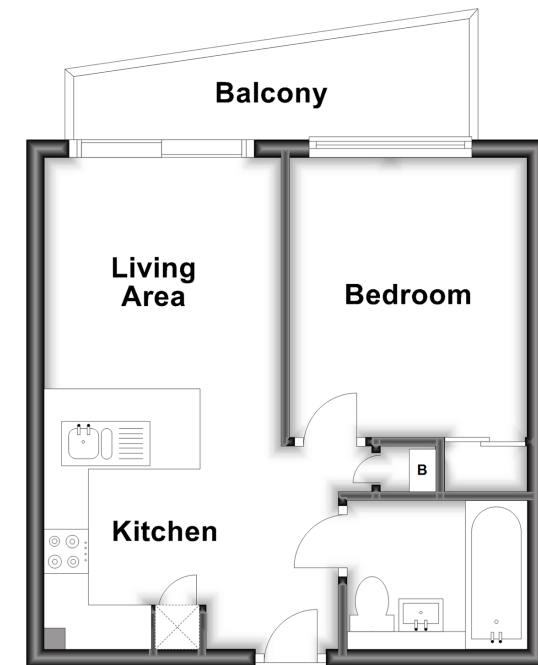
Bathroom: 6'8 x 4'10 (2.03m x 1.47m)

OUTSIDE

Resident's Parking Permit
Communal Garden

Upper Ground Floor

Approx. 30.6 sq. metres (329.1 sq. feet)



Call Horsham - 01403 269268 ■ cubittandwest.co.uk

■ Legal advice should be taken to verify fixtures/fittings, planning, alterations and/or lease details
■ Through a Homewise Home For Life Plan people aged 60+ can secure this property for up to 59% less, by purchasing a Lifetime Lease.

■ Appliances & services are untested, dimensions are approximate and floor plans are not to scale