



Price

£380,000

Leasehold

2x  2x  1x 

Dereham Court, Horsham, West Sussex,
RH12

cubitt&west
Helping you move forwards



Main features

- Brand new apartment in **Highwood Village**
- Allocated parking space
- Beautiful open plan living space
- Stylish kitchen with Bosch integrated appliances
- Amtico flooring and fitted wardrobes
- Secure video entry system
- *Internal images shown are for illustrative purposes only

Accommodation

GROUND FLOOR

Entrance Hall

Living/Dining Room: 16'5 x 13'9 (5.01m x 4.19m)

Kitchen Area: 13'9 x 6'4 (4.19m x 1.93m)

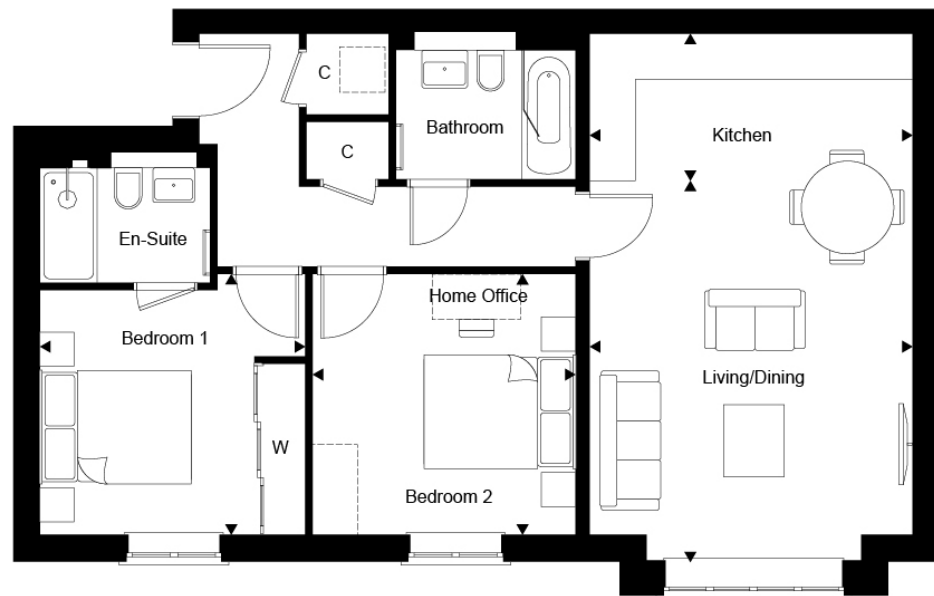
Bedroom 1: 11'5 x 11'3 (3.48m x 3.43m)

En Suite Shower Room

Bedroom 2: 11'3 x 11'3 (3.43m x 3.43m)

OUTSIDE

Allocated Parking Space



Call Horsham - 01403 269268 ■ cubittandwest.co.uk

■ Legal advice should be taken to verify fixtures/fittings, planning, alterations and/or lease details

■ Appliances & services are untested, dimensions are approximate and floor plans are not to scale



20917300/20230405/SEH/CB