



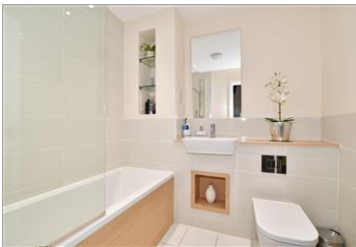
Price
£375,000

Freehold

2x  1x  1x 

**Cook Way, Broadbridge
Heath, Horsham, West
Sussex, RH12**

cubitt & west
Helping you move forwards



Main features

- A fantastic modern home
- Built by Countryside Homes to their 'Heydon' design
- Convenience of 2 allocated parking spaces
- Beautifully presented
- Popular location with good schools and transport links nearby
- Stunning open plan living area

Accommodation

GROUND FLOOR

Entrance Hall

Cloakroom

Lounge/Dining Room: 22'6 at widest point x 14'8 at widest point (6.86m x 4.47m)

Kitchen: 11'5 x 6'3 (3.48m x 1.91m)

FIRST FLOOR

Landing

Bedroom 1: 14'5 at widest point x 9'3 at widest point (4.40m x 2.82m)

Bedroom 2: 14'7 x 9'8 (4.45m x 2.95m)

Bathroom

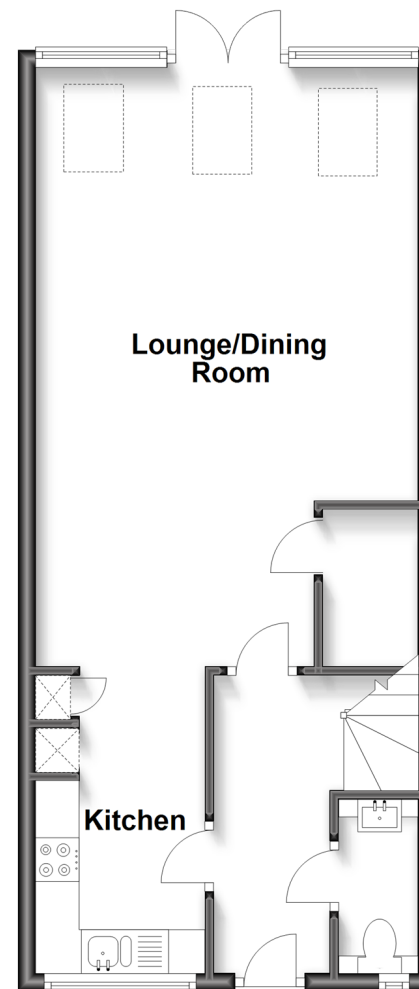
OUTSIDE

2 Allocated Parking Spaces

Front & Rear Garden

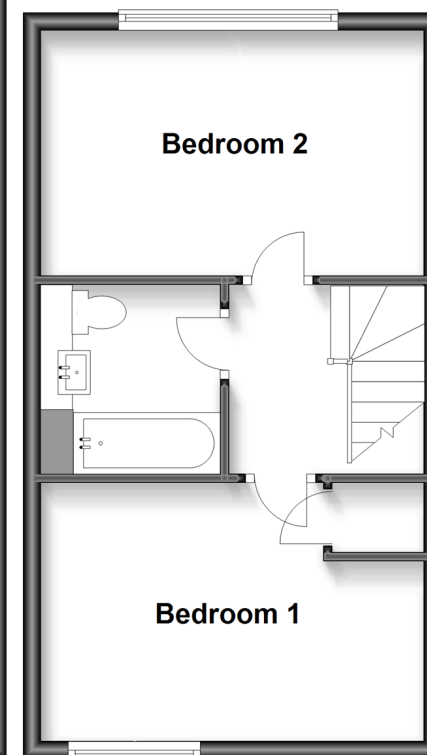
Ground Floor

Approx. 45.4 sq. metres (488.3 sq. feet)



First Floor

Approx. 35.6 sq. metres (383.4 sq. feet)



Call Horsham - 01403 269268 ■ cubittandwest.co.uk

- Legal advice should be taken to verify fixtures/fittings, planning, alterations and/or lease details
- Appliances & services are untested, dimensions are approximate and floor plans are not to scale



20917313/20230426/SEH/RSH