

OVER 60?

Secure this property
for up to **59% less!**



Price

£335,000

Freehold

2x  2x  1x 

Coach House Mews, Horsham Road,
Cowfold, West Sussex, RH13

cubitt&west
Helping you move forwards



Main features

- Gated mews development in the heart of popular village
- Easy road access to Surrey and South Coast
- Convenience of allocated parking space
- Courtyard garden for outdoor entertaining
- Spacious accommodation

Accommodation

GROUND FLOOR

Entrance Hall

Bedroom 1 : 12'1 at widest point x 12'0 into fitted wardrobes (3.69m x 3.66m)

En Suite Shower Room: 11'5 x 4'2 (3.48m x 1.27m)

Bedroom 2: 10'5 x 10'1 (3.18m x 3.08m)

Bathroom: 7'6 x 5'6 (2.29m x 1.68m)

FIRST FLOOR

Landing

Kitchen/Dining Room: 15'0 x 10'1 at widest point (4.58m x 3.08m)

Lounge: 15'9 x 10'6 (4.80m x 3.20m)

Store Room

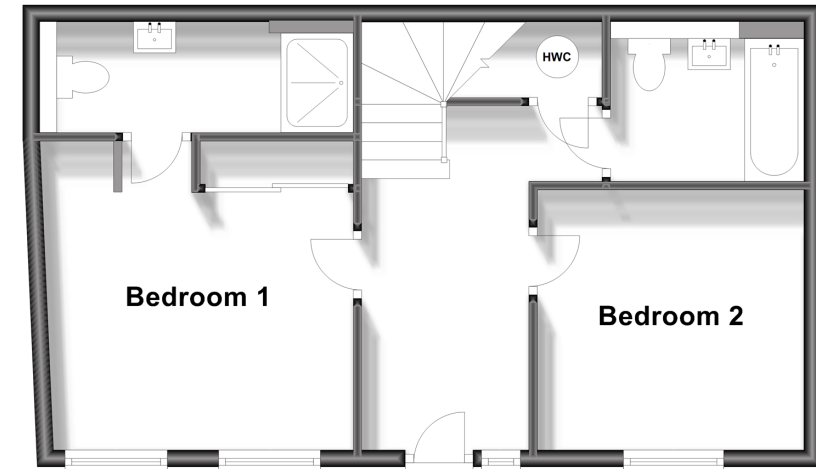
OUTSIDE

Allocated Parking Space

Front Courtyard

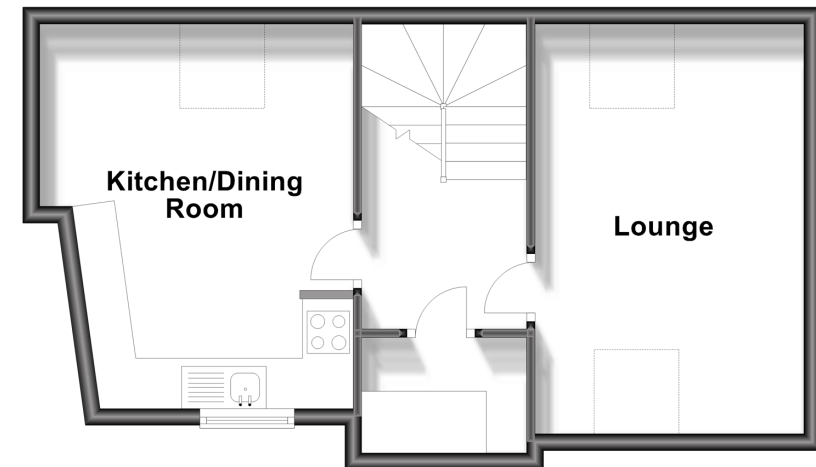
Ground Floor

Approx. 45.5 sq. metres (489.8 sq. feet)



First Floor

Approx. 41.8 sq. metres (449.5 sq. feet)



Call Horsham - 01403 269268 ■ cubittandwest.co.uk

- Legal advice should be taken to verify fixtures/fittings, planning, alterations and/or lease details
- Appliances & services are untested, dimensions are approximate and floor plans are not to scale
- Through a Homewise Home For Life Plan people aged 60+ can secure this property for up to 59% less, by purchasing a Lifetime Lease.



20917345/20230624/RSH/CB