



Price
£525,000

Freehold

3x  1x  1x 

**Farhalls Crescent,
Horsham, West Sussex,
RH12**

OVER 60?

Secure this property
for up to **59% less!**

cubitt&west
Helping you move forwards



Main features

- A beautifully presented extended family home
- Located in a sought after location
- Stunning modern contemporary kitchen
- Great garden room overlooking good size rear garden
- Just a short walk to local shops, 98 bus route and Littlehaven station

Accommodation

GROUND FLOOR

Entrance Hall

Kitchen: 15'8 at widest point x 10'6 at widest point (4.78m x 3.20m)

Utility Room: 9'5 x 4'9 (2.87m x 1.45m)

Cloakroom

Lounge/Dining Room: 14'2 x 11'0 (4.32m x 3.36m) narrowing to 9'6 x 9'3 (2.90m x 2.82m)

Garden Room: 12'7 x 8'7 (3.84m x 2.62m)

FIRST FLOOR

Landing

Bathroom: 8'0 x 5'5 (2.44m x 1.65m)

Bedroom 2: 9'11 up to fitted wardrobes x 9'2 at widest point (3.02m x 2.80m)

Bedroom 1: 11'10 up to fitted wardrobes x 10'9 at widest point (3.61m x 3.28m)

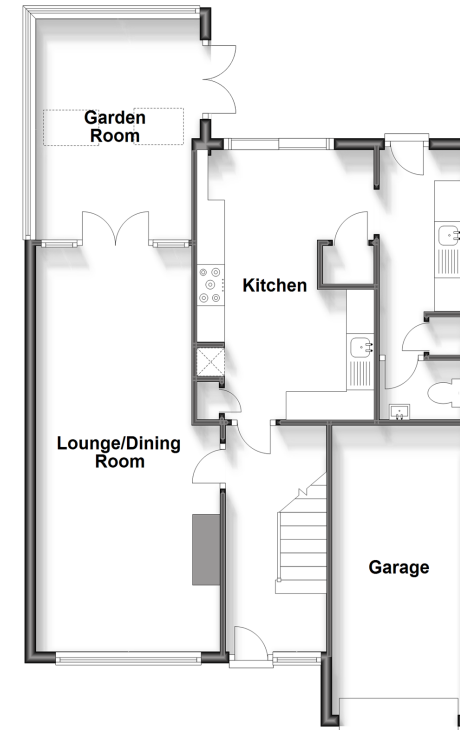
Bedroom 3: 10'3 at widest point x 6'6 at widest point (3.13m x 1.98m)

OUTSIDE

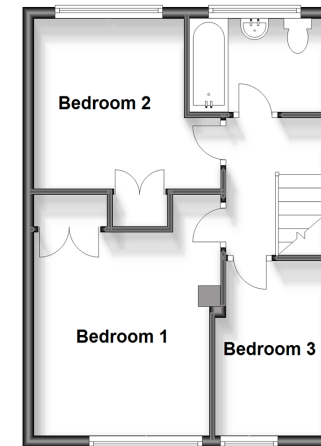
Front & Rear Garden

Garage & Driveway

Ground Floor
Approx. 78.3 sq. metres (842.9 sq. feet)

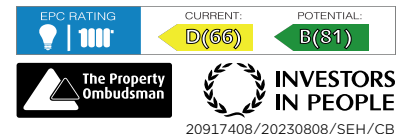


First Floor
Approx. 39.0 sq. metres (419.3 sq. feet)



Call Horsham - 01403 269268 ■ cubittandwest.co.uk

- Legal advice should be taken to verify fixtures/fittings, planning, alterations and/or lease details
- Appliances & services are untested, dimensions are approximate and floor plans are not to scale
- Through a Homewise Home For Life Plan people aged 60+ can secure this property for up to 59% less, by purchasing a Lifetime Lease.



20917408/20230808/SEH/CB