



Price
£575,000

Freehold

4x  3x  1x 

**Adams Close,
Broadbridge Heath,
Horsham, West Sussex,
RH12**

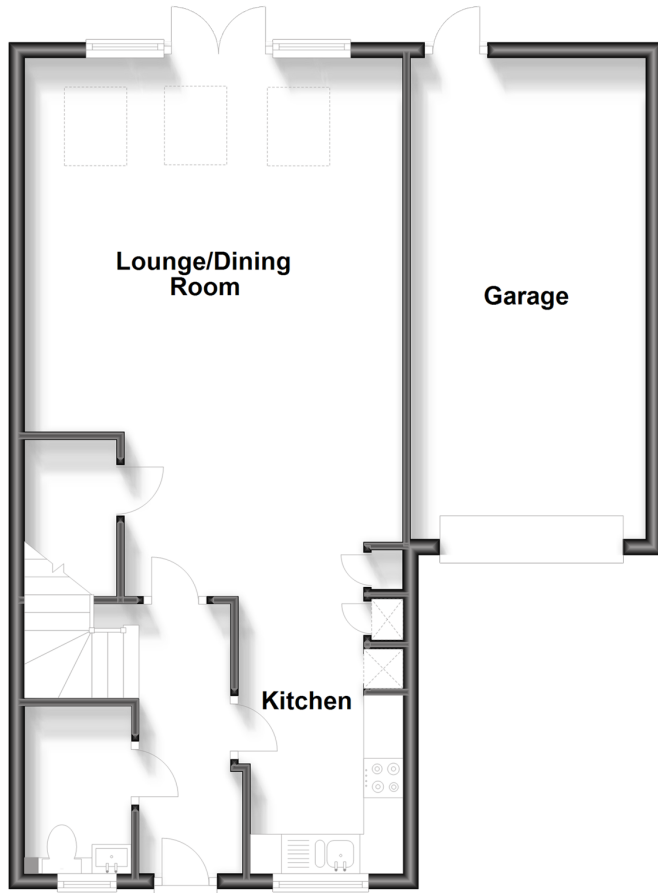
OVER 60?

Secure this property
for up to **59% less!**

cubitt&west
Helping you move forwards

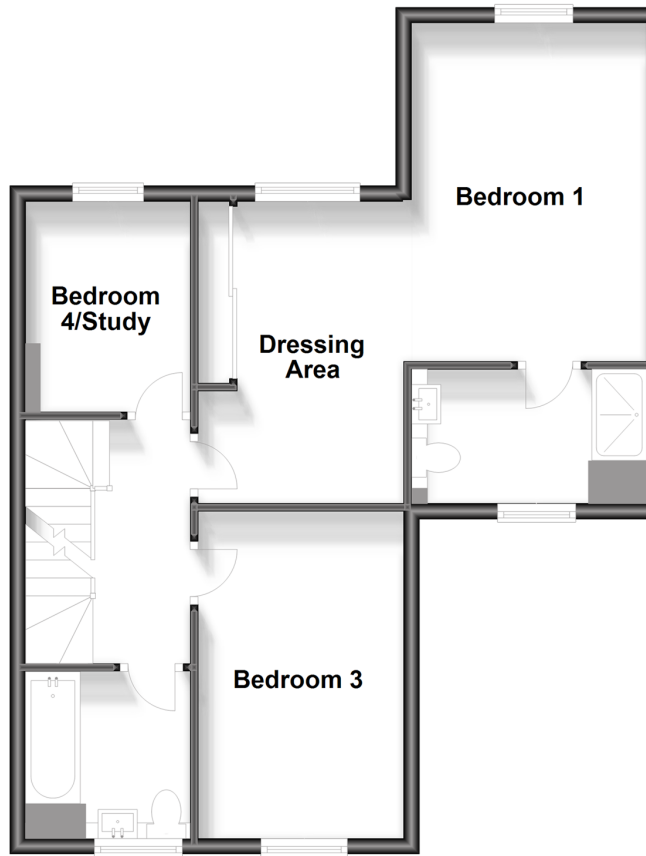
Ground Floor

Approx. 69.1 sq. metres (743.7 sq. feet)



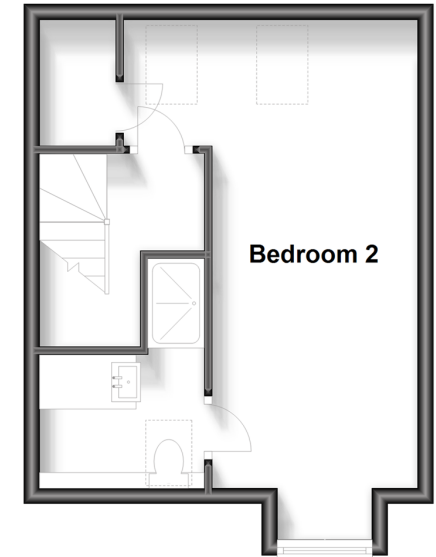
First Floor

Approx. 57.8 sq. metres (622.7 sq. feet)



Second Floor

Approx. 29.6 sq. metres (318.4 sq. feet)



Accommodation

GROUND FLOOR

Entrance Hall

Cloakroom

Kitchen: 13'6 x 7'0 (4.12m x 2.14m)

Lounge/Dining Room: 20'5 at widest point x 15'10 at widest point (6.23m x 4.83m)

FIRST FLOOR

Landing

Bedroom 1: 12'8 x 8'7 into fitted wardrobes (3.86m x 2.62m)

En Suite Shower Room: 9'10 x 5'4 (3.00m x 1.63m)

Dressing Area: 14'1 x 9'11 into fitted wardrobes (4.30m x 3.02m)

Bedroom 4/Study: 8'10 x 6'11 (2.69m x 2.11m)

Bedroom 3: 13'8 x 8'7 (4.17m x 2.62m)

Bathroom: 6'11 x 5'11 (2.11m x 1.80m)

SECOND FLOOR

Landing

Bedroom 2: 19'7 at widest point x 8'9 up to door well (5.97m x 2.67m)

En Suite Shower Room: 5'11 x 5'1 (1.80m x 1.55m)

Walk-in Wardrobe

OUTSIDE

Integral Garage: 20'4 x 10'1 (6.20m x 3.08m)

Off Road Parking

Front & Rear Gardens



Main features

- "The Wakeford" by Countryside Homes, in stunning condition
- Located in a quiet cul de sac, no through traffic
- Beautiful open plan living space and kitchen area
- Fantastic principle bedroom with dressing area and luxury en-suite
- Popular location just a short walk to open countryside and the Downs Link



Nearest Schools

Primary Schools: Shelley Primary 0.5 miles, Arunside School, Horsham 0.9 miles, St John's Catholic Primary 0.9 miles.
Secondary Schools: Tanbridge House School 0.4 miles, Christ's Hospital 1.3 miles, Farlington School 1.7 miles



Transport Information

Train Stations: Christs Hospital 0.8 miles, Horsham 1.8 miles, Warnham 2.4 miles



Address

Adams Close, Broadbridge Heath, Horsham, West Sussex, RH12



Directions

For directions to this property please contact us.



cubitt&west
Helping you move forwards

Call Horsham Branch 01403 269268 ■ cubittandwest.co.uk



■ Legal advice should be taken to verify fixtures/fittings, planning, alterations and/or lease details ■ Appliances & services are untested, dimensions are approximate and floor plans are not to scale
■ Through a Homewise Home For Life Plan people aged 60+ can secure this property for up to 59% less, by purchasing a Lifetime Lease.



20917420/20231123/RSH/CB