



OVER 60?

Secure this property
for up to **59% less!**

Price
£500,000

Freehold

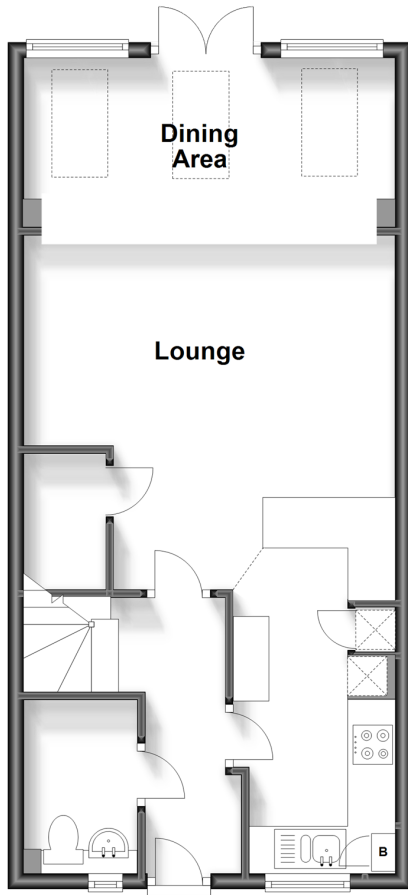
4x  2x  1x 

**Farley Close,
Broadbridge Heath,
Horsham, West Sussex,
RH12**

cubitt&west
Helping you move forwards

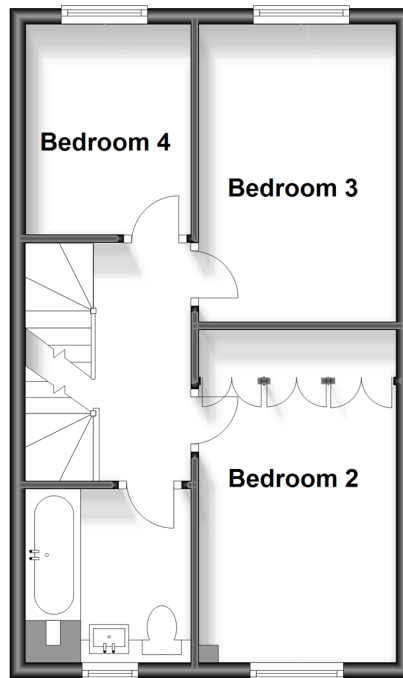
Ground Floor

Approx. 48.7 sq. metres (524.4 sq. feet)



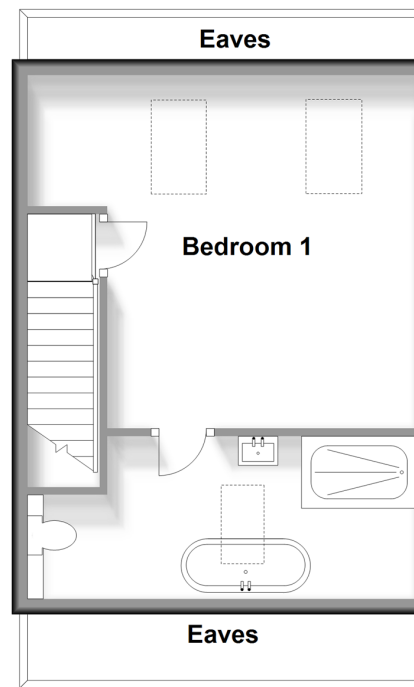
First Floor

Approx. 38.1 sq. metres (410.5 sq. feet)



Second Floor

Approx. 32.7 sq. metres (352.5 sq. feet)



Accommodation

GROUND FLOOR

Entrance Hall

Cloakroom

Kitchen: 16'0 x 7'1 (4.88m x 2.16m)

Lounge/Dining Area: 22'6 at widest point x 16'2 at widest point (6.86m x 4.93m)

FIRST FLOOR

Landing

Bedroom 4: 9'4 x 7'0 (2.85m x 2.14m)

Bedroom 3: 13'1 x 9'0 (3.99m x 2.75m)

Bedroom 2: 11'5 up to fitted wardrobes x 8'11 (3.48m x 2.72m)

Bathroom: 6'10 x 5'8 (2.08m x 1.73m)

SECOND FLOOR

Landing

Bedroom 1: 14'10 at widest point x 12'10 at widest point (4.52m x 3.91m)

En Suite Bathroom: 14'4 at widest point x 6'9 at widest point (4.37m x 2.06m)

OUTSIDE

Garage: 21'2 x 9'11 (6.46m x 3.02m)

Allocated Parking Space

Front & Rear Gardens



Main features

- A well loved and cared for home in immaculate condition
- Stunning open plan kitchen/living space
- Loft converted in 2021 provides principal bedroom with en suite
- Convenience of garage and allocated parking space
- Great location near to the main road network and country walks



Nearest Schools

Primary Schools: Shelley Primary 0.5 miles, Arunside School, Horsham 1.3 miles, St John's Catholic Primary 1.3 miles.
Secondary Schools: Tanbridge House School 0.8 miles, Farlington School 1.4 miles, Christ's Hospital 1.5 miles



Transport Information

Train Stations: Christs Hospital 1.0 miles, Horsham 2.1 miles, Warnham 2.5 miles



Address

Farley Close, Broadbridge Heath, Horsham, West Sussex, RH12



Directions

For directions to this property please contact us.



cubitt&west
Helping you move forwards

Call Horsham Branch 01403 269268 ■ cubittandwest.co.uk



■ Legal advice should be taken to verify fixtures/fittings, planning, alterations and/or lease details ■ Appliances & services are untested, dimensions are approximate and floor plans are not to scale
■ Through a Homewise Home For Life Plan people aged 60+ can secure this property for up to 59% less, by purchasing a Lifetime Lease.



20917464/20231101/SEH/CB