



OVER 60?

Secure this property
for up to **59% less!**

Price

£350,000

Freehold

2x  1x  1x 

**Burns Close, Horsham,
West Sussex, RH12**

cubitt&west
Helping you move forwards



Main features

- Good size, private rear garden
- Convenience of 2 allocated parking spaces
- With no onward chain, the property is ready to move into
- Situated in a quiet cul de sac
- Easy access to both Littlehaven Station and Horsham Bypass

Accommodation

GROUND FLOOR

Entrance Hall

Cloakroom

Kitchen: 9'11 x 5'11 (3.02m x 1.80m)

Lounge: 15'2 at widest point x 11'11 at widest point (4.63m x 3.63m)

FIRST FLOOR

Landing

Bedroom 1: 11'11 x 9'2 (3.63m x 2.80m)

Bedroom 2: 11'11 into fitted wardrobes x 8'8 (3.63m x 2.64m)

Shower Room: 7'0 x 5'6 (2.14m x 1.68m)

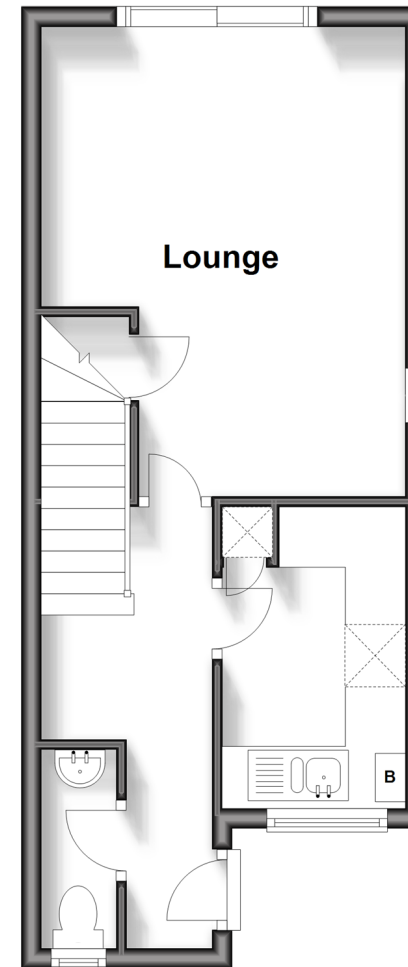
OUTSIDE

Allocated Parking

Front & Rear Gardens

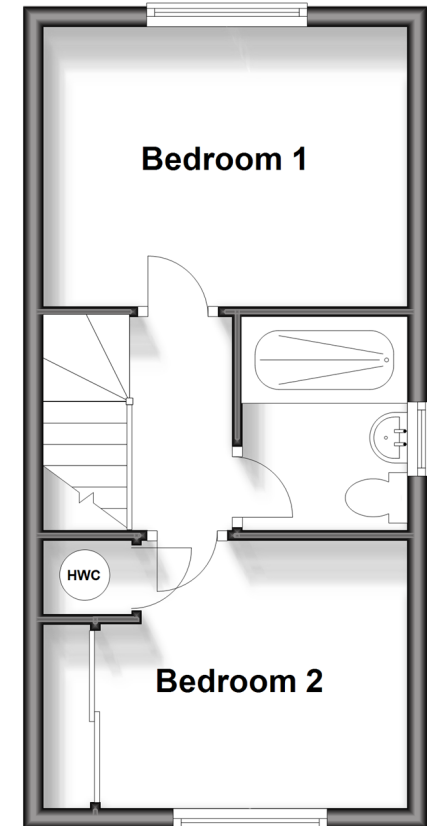
Ground Floor

Approx. 30.5 sq. metres (327.8 sq. feet)



First Floor

Approx. 28.1 sq. metres (302.4 sq. feet)



Call Horsham - 01403 269268 ■ cubittandwest.co.uk

- Legal advice should be taken to verify fixtures/fittings, planning, alterations and/or lease details
- Appliances & services are untested, dimensions are approximate and floor plans are not to scale
- Through a Homewise Home For Life Plan people aged 60+ can secure this property for up to 59% less, by purchasing a Lifetime Lease.



20917496/20240124/RSH/CB