



**Price**

**£180,000**

**Leasehold**

1x  1x  1x 

**The Orchards,  
Littlehaven Lane,  
Horsham, West Sussex,  
RH12**

**OVER 60?**

Secure this property  
for up to **59% less!**

**cubitt&west**  
Helping you move forwards





## Main features

- A nice size layout with separate kitchen and lounge/diner
- Own private entrance
- Communal garden to enjoy
- Convenience of communal shared parking area
- Just a short walk to Littlehaven Station and local shops

## Accommodation

### GROUND FLOOR

Entrance Hallway

Storage Cupboard

Lounge/Diner: 14'10 at widest point x 11'8 at widest point (4.52m x 3.56m)

Kitchen: 11'1 x 5'11 (3.38m x 1.80m)

Bedroom: 10'8 x 9'4 up to fitted wardrobes (3.25m x 2.85m)

Bathroom: 6'9 x 5'5 (2.06m x 1.65m)

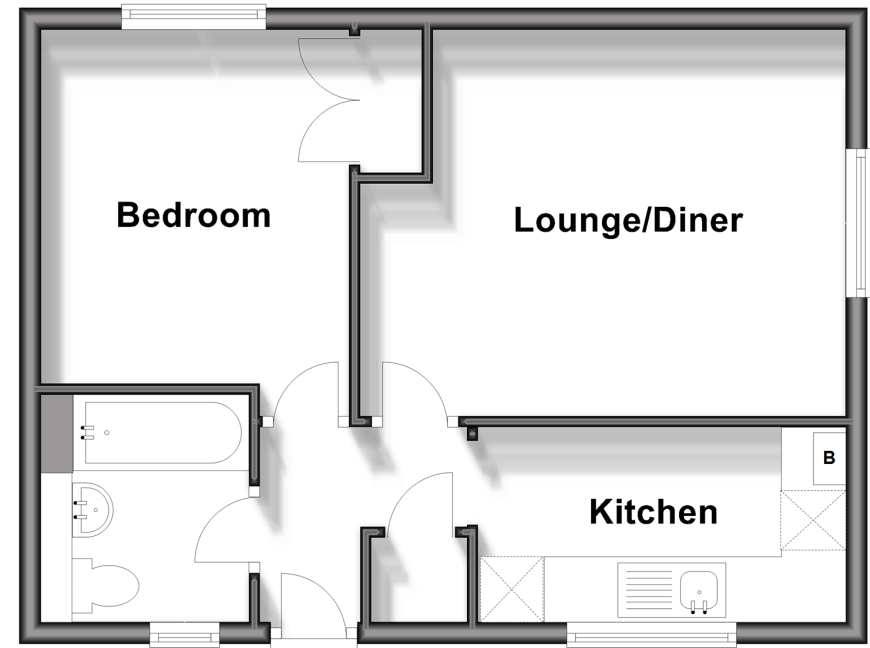
### OUTSIDE

Communal Garden

Communal Parking

## Ground Floor

Approx. 40.6 sq. metres (437.3 sq. feet)



**Call Horsham - 01403 269268 ■ [cubittandwest.co.uk](http://cubittandwest.co.uk)**

■ Legal advice should be taken to verify fixtures/fittings, planning, alterations and/or lease details  
 ■ Through a Homewise Home For Life Plan people aged 60+ can secure this property for up to 59% less, by purchasing a Lifetime Lease.

■ Appliances & services are untested, dimensions are approximate and floor plans are not to scale