



OVER 60?

Secure this property
for up to **59% less!**

Price

£700,000

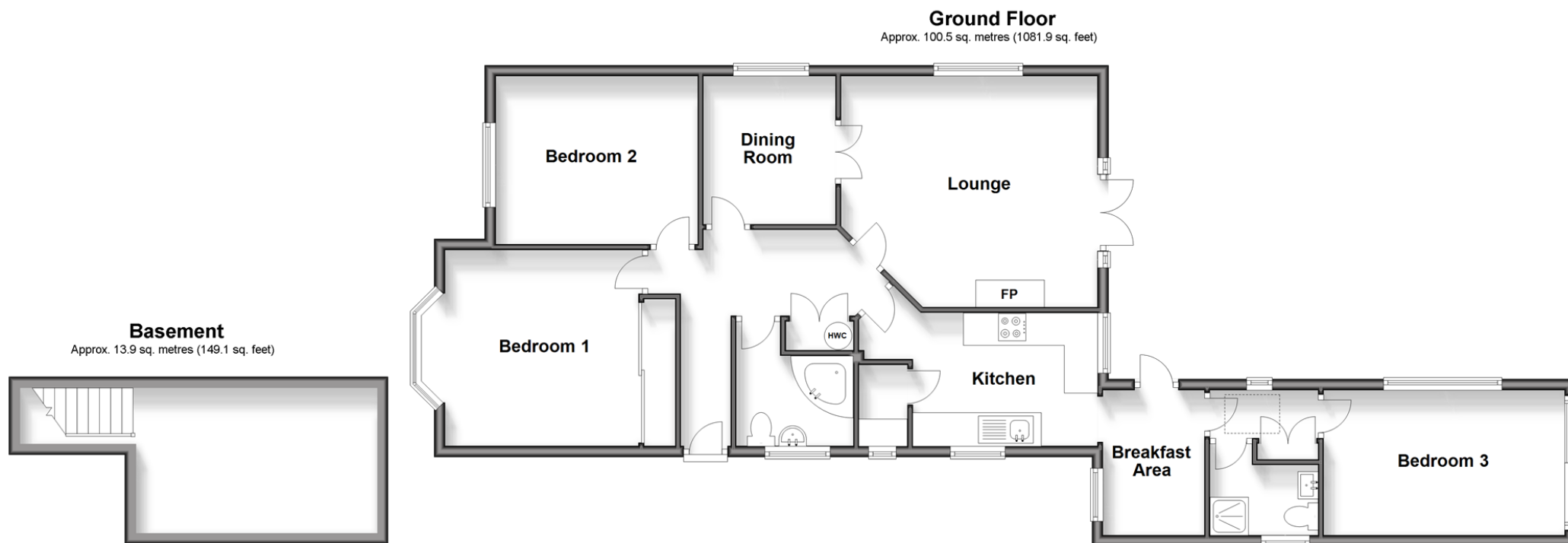
Freehold

3x  2x  2x 

Rusper Road, Rusper, Horsham, West

Sussex, RH12

cubitt&west
Helping you move forwards



Accommodation

GROUND FLOOR

Entrance Hallway

Bathroom: 7'0 x 5'5 (2.14m x 1.65m)

Bedroom 1: 13'4 into fitted wardrobes x 11'9 (4.07m x 3.58m)

Bedroom 2: 12'1 x 10'1 (3.69m x 3.08m)

Dining Room: 8'11 x 7'11 (2.72m x 2.41m)

Lounge: 13'11 at widest point x 13'4 at widest point (4.24m x 4.07m)

Kitchen: 10'11 at widest point x 7'6 at widest point (3.33m x 2.29m)

Breakfast Area: 8'8 x 6'1 (2.64m x 1.86m)

Inner Lobby

Wet Room: 6'7 x 4'3 (2.01m x 1.30m)

Bedroom 3: 14'5 x 8'9 (4.40m x 2.67m)

BASEMENT

Cellar: 14'3 x 8'8 (4.35m x 2.64m)

OUTSIDE

Garage : 28'10 x 9'2 (8.79m x 2.80m)

Driveway

Front & Rear Gardens

Summer House



Main features

- Great sought after location
- Walking distance to station Parking for several cars and garage.
- Potential to further extend and improve, subject to any necessary consents.
- Versatile, spacious accommodation with addition of full height basement
- Beautifully landscaped extensive rear gardens with summerhouse



Nearest Schools

Primary Schools: Kingslea Primary 0.6 miles, Northolmes Junior School, Horsham 0.7 miles, St Robert Southwell Catholic Primary, Horsham 0.7 miles. Secondary Schools: Millais School 1.0 miles, Forest School, The 1.2 miles, Queen Elizabeth II Silver Jubilee, Horsham 1.2 miles



Transport Information

Train Stations: Littlehaven 0.8 miles, Horsham 1.0 miles, Christs Hospital 2.8 miles



Address

Rusper Road, Rusper, Horsham, West Sussex, RH12



Directions

For directions to this property please contact us.



cubitt&west
Helping you move forwards

Call Horsham Branch 01403 269268 ■ cubittandwest.co.uk



■ Legal advice should be taken to verify fixtures/fittings, planning, alterations and/or lease details ■ Appliances & services are untested, dimensions are approximate and floor plans are not to scale
■ Through a Homewise Home For Life Plan people aged 60+ can secure this property for up to 59% less, by purchasing a Lifetime Lease.



20917545/20240212/SEH/CB