



Price
£500,000

Freehold

3x  2x  1x 

**Tern Avenue, Horsham,
West Sussex, RH12**

OVER 60?

Secure this property
for up to **59% less!**

cubitt&west
Helping you move forwards



Main features

- Family home built by Cala Homes in 2019
- 5 years Builder's warranty
- Well presented and ready to move into
- Close to Littlehaven Station and local shops
- Bohunt Secondary and North Heath Lane Primary schools nearby

Accommodation

GROUND FLOOR

Entrance Hall
Cloakroom
Lounge/Dining Room: 16'9 at widest point x 15'11 at widest point (5.11m x 4.85m)
Kitchen: 11'10 x 8'3 (3.61m x 2.52m)

FIRST FLOOR

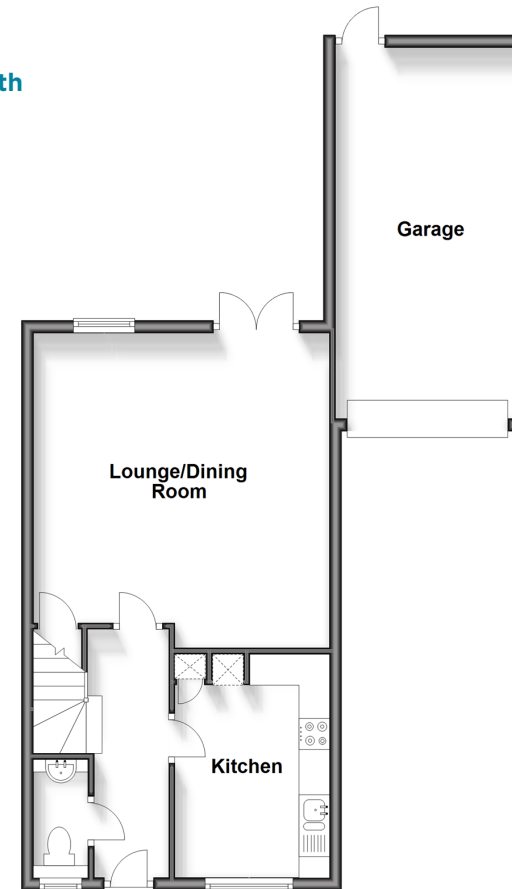
Landing
Bedroom 3: 12'8 x 6'6 (3.86m x 1.98m)
Bedroom 2: 10'7 up to fitted wardrobes x 9'0 (3.23m x 2.75m)
Bedroom 1: 11'6 into fitted wardrobes x 9'0 (3.51m x 2.75m)
En Suite Shower Room: 6'6 x 5'6 (1.98m x 1.68m)
Bathroom

OUTSIDE

Garage: 19'9 x 9'0 (6.02m x 2.75m)
Driveway
Front & Rear Garden

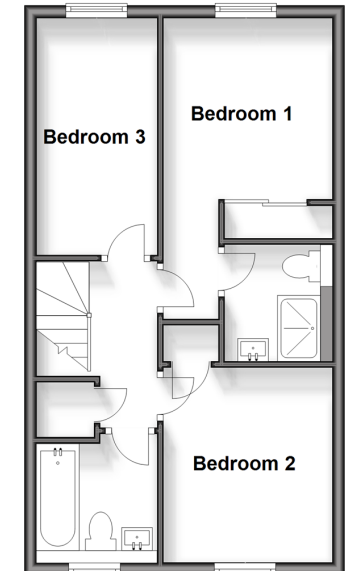
Ground Floor

Approx. 60.7 sq. metres (653.1 sq. feet)



First Floor

Approx. 42.5 sq. metres (457.5 sq. feet)



Call Horsham - 01403 269268 ■ cubittandwest.co.uk

- Legal advice should be taken to verify fixtures/fittings, planning, alterations and/or lease details
- Appliances & services are untested, dimensions are approximate and floor plans are not to scale
- Through a Homewise Home For Life Plan people aged 60+ can secure this property for up to 59% less, by purchasing a Lifetime Lease.



20917599/20240325/SEH/CB