



Price

£290,000

Leasehold

2x  1x  1x 

**Linden House, Chart
Way, Horsham, West
Sussex, RH12**

OVER 60?

Secure this property
for up to **59% less!**

cubitt&west
Helping you move forwards



Main features

- Modern property in town centre location
- Just a short walk to the station, the Historic Carfax and the park
- Convenience of an allocated parking space
- With no onward chain the property is ready to move into
- Great first time buy!

Accommodation

GROUND FLOOR

Entrance Hall

Lounge: 12'3 at widest point x 10'9 at widest point (3.74m x 3.28m)

Kitchen: 12'10 x 11'8 (3.91m x 3.56m)

Bedroom 2: 12'8 x 7'7 (3.86m x 2.31m)

Bedroom 1: 12'8 x 9'10 (3.86m x 3.00m)

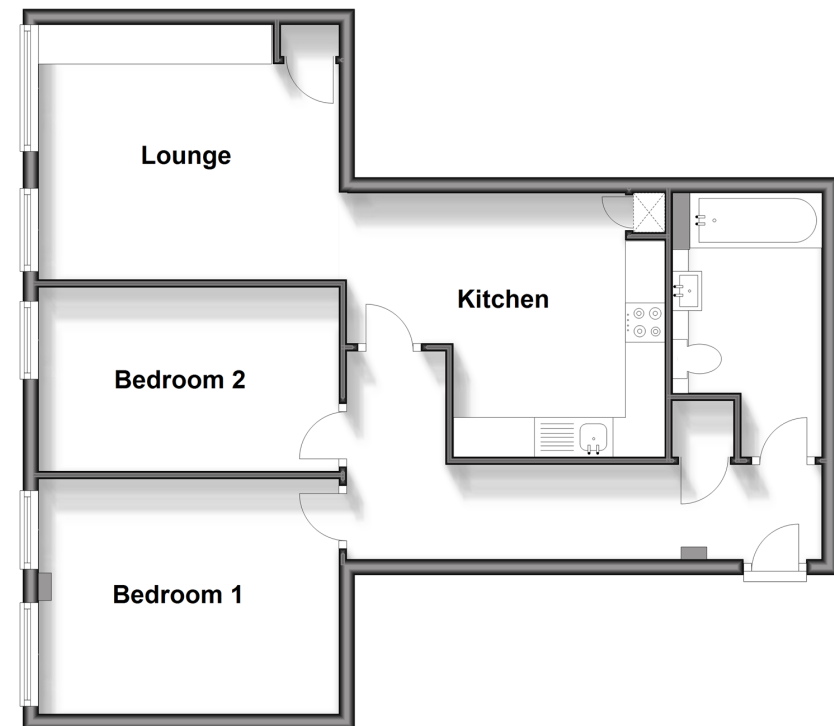
Bathroom: 8'6 into door well x 5'3 (2.59m x 1.60m)

OUTSIDE

Allocated Parking Space

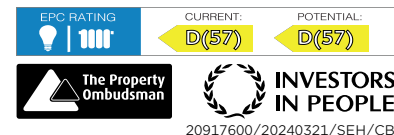
Ground Floor

Approx. 62.2 sq. metres (669.8 sq. feet)



Call Horsham - 01403 269268 ■ cubittandwest.co.uk

- Legal advice should be taken to verify fixtures/fittings, planning, alterations and/or lease details
- Appliances & services are untested, dimensions are approximate and floor plans are not to scale
- Through a Homewise Home For Life Plan people aged 60+ can secure this property for up to 59% less, by purchasing a Lifetime Lease.



20917600/20240321/SEH/CB