



OVER 60?

Secure this property
for up to **59% less!**

Price

£500,000

Freehold

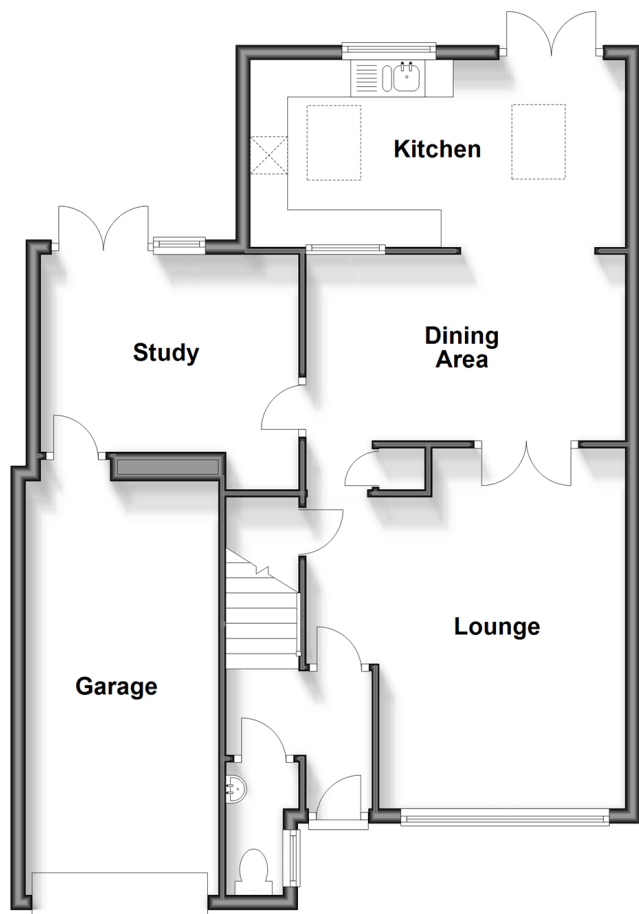
3x  1x  2x 

**Chennells Way,
Horsham, West Sussex,
RH12**

cubitt&west
Helping you move forwards

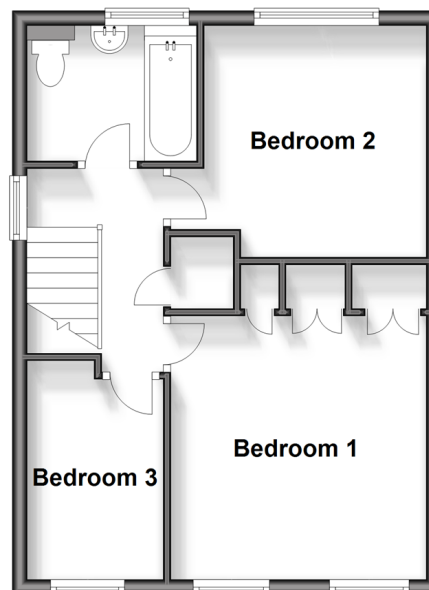
Ground Floor

Approx. 76.7 sq. metres (825.9 sq. feet)



First Floor

Approx. 40.2 sq. metres (432.8 sq. feet)



Outbuilding

Approx. 10.0 sq. metres (107.3 sq. feet)



Accommodation

GROUND FLOOR

Entrance Hall

Cloakroom

Lounge: 15'2 at widest point x 10'10 at widest point (4.63m x 3.30m)

Dining Area: 14'3 x 8'2 up to door well (4.35m x 2.49m)

Study: 11'5 at widest point x 8'8 at widest point (3.48m x 2.64m)

Kitchen: 16'6 x 8'3 (5.03m x 2.52m)

FIRST FLOOR

Landing

Bathroom: 7'6 x 6'3 (2.29m x 1.91m)

Bedroom 1: 11'3 into fitted wardrobes x 10'6 (3.43m x 3.20m)

Bedroom 2: 11'8 at widest point x 10'1 at widest point (3.56m x 3.08m)

Bedroom 3: 9'11 at widest point x 7'4 (3.02m x 2.24m)

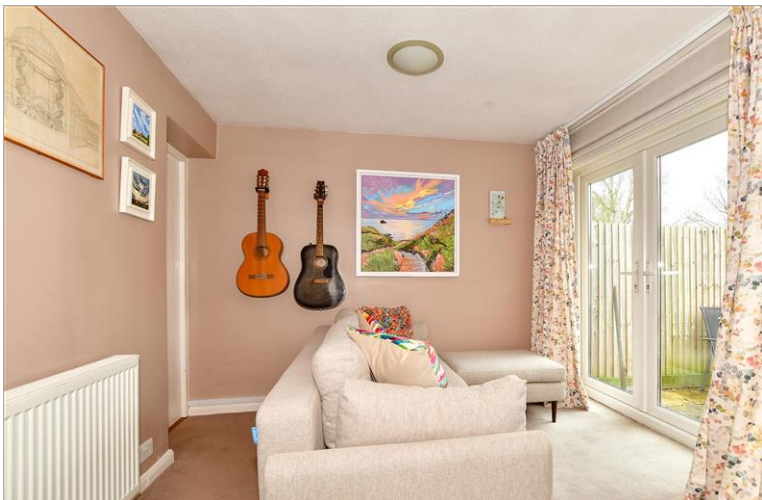
OUTBUILDING

Room 1

(Currently used as an office): 10'6 x 10'5 (3.20m x 3.18m)

OUTSIDE

Garage & Off Road Parking
Front & Rear Garden



Main features

- Very well presented and extended property
- Lovely kitchen/breakfast room with access to rear garden
- Outbuilding in garden providing a perfect office space
- Quiet cul de sac location
- Convenience of a garage and driveway
- Good location close to shops, schools and station
- Great entertaining space



Nearest Schools

Primary Schools: North Heath Community Primary 0.4 miles, Holbrook Primary 0.9 miles, All Saints CofE Primary 1.0 miles. Secondary Schools: Millais School 1.8 miles, Forest School, The 2.0 miles, Queen Elizabeth II Silver Jubilee School, Horsham 2.0 miles



Transport Information

Train Stations: Littlehaven 0.6 miles, Horsham 1.2 miles, Faygate 2.7 miles



Address

Chennells Way, Horsham, West Sussex, RH12



Directions

For directions to this property please contact us.



cubitt&west
Helping you move forwards

Call Horsham Branch 01403 269268 ■ cubittandwest.co.uk



■ Legal advice should be taken to verify fixtures/fittings, planning, alterations and/or lease details ■ Appliances & services are untested, dimensions are approximate and floor plans are not to scale
■ Through a Homewise Home For Life Plan people aged 60+ can secure this property for up to 59% less, by purchasing a Lifetime Lease.



20917606/20240318/SEH/RSH