



Price

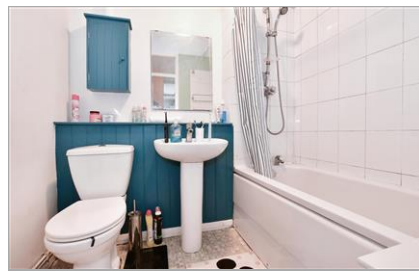
£180,000

Leasehold

1x  1x  1x 

**The Orchards,
Littlehaven Lane,
Horsham, West Sussex,
RH12**

cubitt&west
Helping you move forwards



Main features

- A nice size layout with separate kitchen and lounge/diner
- Own private entrance
- Communal garden to enjoy
- Convenience of communal shared parking area
- Just a short walk to Littlehaven Station and local shops

Accommodation

GROUND FLOOR

Entrance Hallway

Storage Cupboard

Lounge/Diner: 14'10 at widest point x 11'8 at widest point (4.52m x 3.56m)

Kitchen: 11'1 x 5'11 (3.38m x 1.80m)

Bedroom : 10'8 x 9'4 into fitted wardrobes (3.25m x 2.85m)

Bathroom: 6'9 x 5'5 (2.06m x 1.65m)

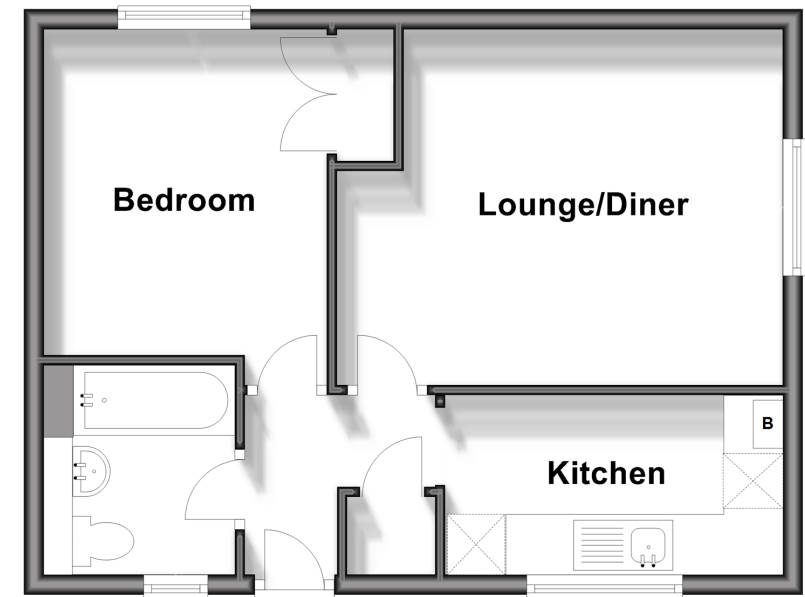
OUTSIDE

Communal Garden

Communal Parking

Ground Floor

Approx. 40.6 sq. metres (437.3 sq. feet)



Call Horsham - 01403 269268 ■ cubittandwest.co.uk

■ Legal advice should be taken to verify fixtures/fittings, planning, alterations and/or lease details

■ Appliances & services are untested, dimensions are approximate and floor plans are not to scale