



**Price**  
**£599,950**

**Freehold**

5x  3x  1x 

**Oddstones, Codmore  
Hill, Pulborough, West  
Sussex, RH20**

**OVER 60?**

You could get up to  
**59% off** the price!\*

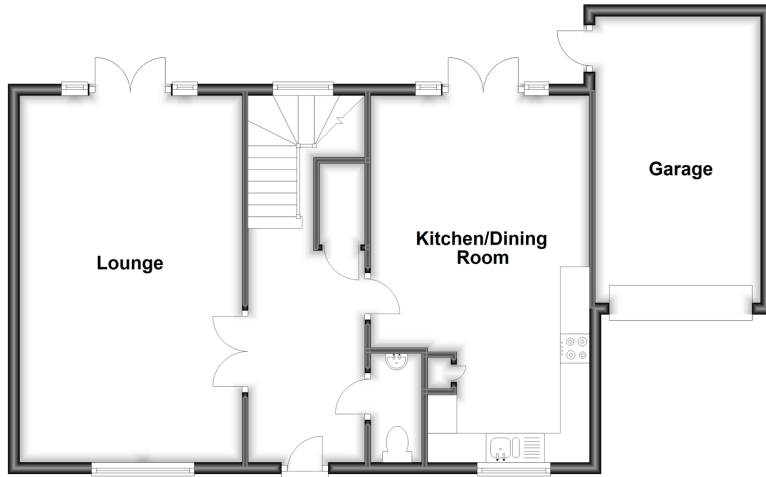


Video Tour available

**cubitt&west**  
Helping you move forwards

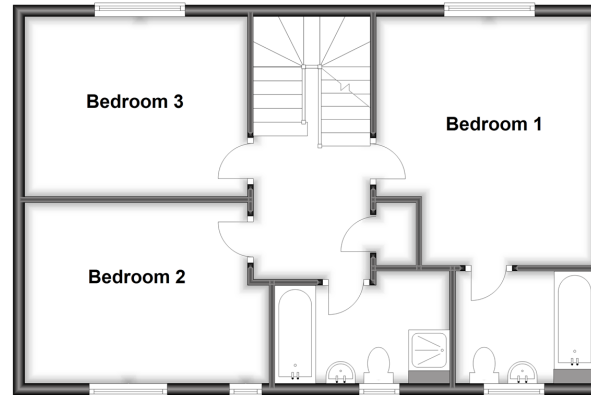
### Ground Floor

Approx. 75.5 sq. metres (812.2 sq. feet)



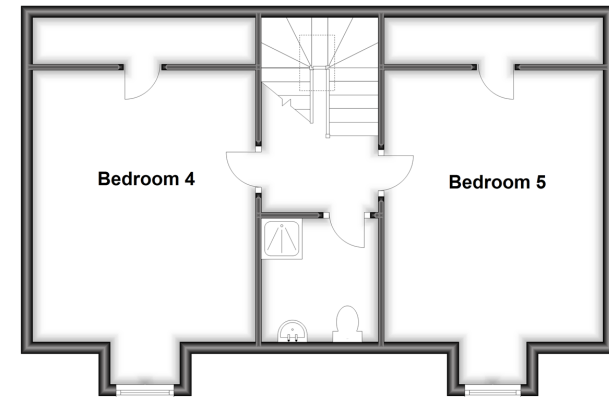
### First Floor

Approx. 61.2 sq. metres (658.8 sq. feet)



### Second Floor

Approx. 55.8 sq. metres (601.0 sq. feet)



## Accommodation

### GROUND FLOOR

Entrance Hall

Cloakroom

**Kitchen/Dining Room:** 20'8 x 12'2  
(6.30m x 3.71m)

**Lounge:** 20'8 x 12'5 (6.30m x 3.79m)

### FIRST FLOOR

Landing

Bathroom

**Bedroom 1:** 14'1 x 12'2 (4.30m x 3.71m)

**Ensuite Bathroom**

**Bedroom 2:** 13'7 x 10'5 (4.14m x 3.18m)

**Bedroom 3:** 12'5 x 10'0 (3.79m x 3.05m)

### SECOND FLOOR

Landing

Shower Room

**Bedroom 4:** 15'2 up to fitted wardrobes  
x 12'1 (4.63m x 3.69m)

**Bedroom 5:** 15'2 up to fitted wardrobes  
x 12'5 (4.63m x 3.79m)

### OUTSIDE

Driveway

Integral Garage

Front Garden

Rear Garden



## Main features

- Set over three floors, offering 2000 sq ft of space
- Built around ten years ago with scope for the next owner to add their own stamp
- The lovely open plan kitchen/dining room gives access to the rear garden
- Driveway for two cars, plus an integral garage
- Walk to the primary school and local amenities
- No ongoing chain



### Nearest Schools

Primary School: St Mary's C of E Primary School

Secondary School: The Weald School 5.4 miles



### Transport Information

Train Stations: Pulborough 1.7 miles, Billingshurst 4.8 miles



### Address

Oddstones, Codmore Hill, Pulborough, West Sussex, RH20



### Directions

For directions to this property please contact us.



**cubitt&west**  
Helping you move forwards

Call Pulborough Branch 01798 875151 ■ [cubittandwest.co.uk](https://cubittandwest.co.uk)



- Legal advice should be taken to verify fixtures/fittings, planning, alterations and/or lease details
- Appliances & services are untested, dimensions are approximate and floor plans are not to scale
- Our Homewise partnership offer a 'Home for Life' plan to buyers over 60, granting a lifetime lease for your protection and reducing the purchase price by up to 59%



21404498/20220913/ML/ML