



Price

£240,000

Leasehold

2x  2x  1x 

**Oddstones, Codmore
Hill, Pulborough, West
Sussex, RH20**

OVER 60?

Secure this property
for up to **59% less!**

cubitt&west
Helping you move forwards



Main features

- A wonderful spacious ground floor apartment with a patio area
- Very well presented throughout
- Accommodation 68.1 sqm (733.6 sqft)
- Allocated parking immediately outside the rear entrance
- Easy access to the supermarkets, school, park and other amenities

Accommodation

GROUND FLOOR

Entrance Hall

Kitchen/Living Room: 21'0 x 12'3
(6.41m x 3.74m)

Bedroom 1: 14'4 x 9'4 (4.37m x 2.85m)

Ensuite Shower Room

Bedroom 2: 12'3 x 9'5 (3.74m x 2.87m)

Bathroom

OUTSIDE

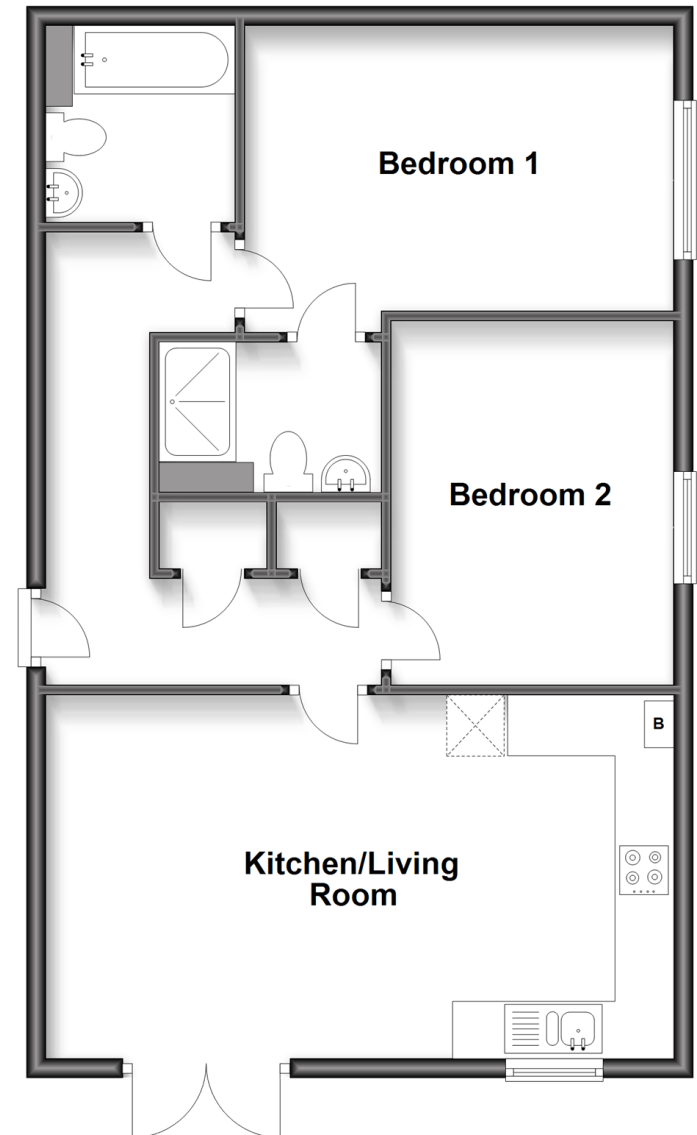
Allocated Parking

Patio Area

Communal Garden

Ground Floor

Approx. 68.1 sq. metres (733.6 sq. feet)



Call Pulborough - 01798 875151 ■ cubittandwest.co.uk

- Legal advice should be taken to verify fixtures/fittings, planning, alterations and/or lease details
- Appliances & services are untested, dimensions are approximate and floor plans are not to scale
- Through a Homewise Home For Life Plan people aged 60+ can secure this property for up to 59% less, by purchasing a Lifetime Lease.



21405407/20240422/JD/JD