



OVER 60?

Secure this property
for up to **59% less!**

Price

£450,000

Freehold

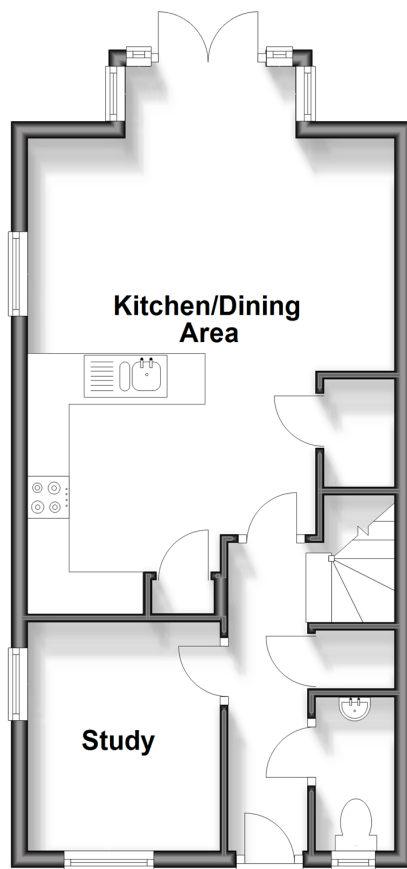
3x  2x  2x 

**Toronto Road, Petworth,
West Sussex, GU28**

cubitt&west
Helping you move forwards

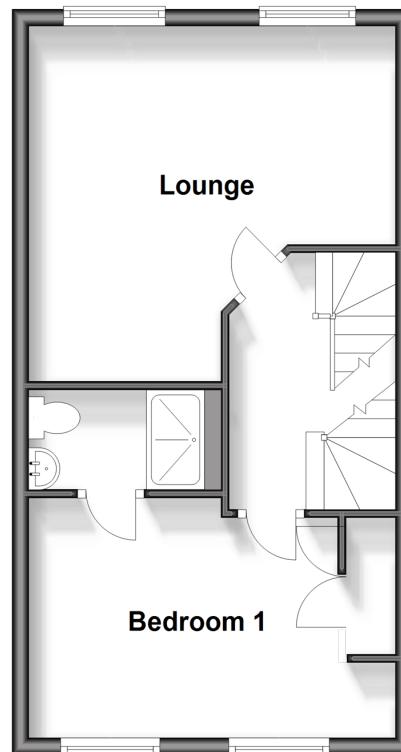
Ground Floor

Approx. 39.3 sq. metres (422.6 sq. feet)



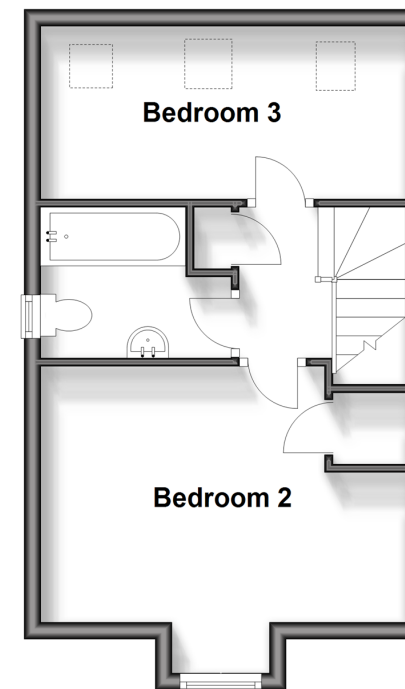
First Floor

Approx. 37.5 sq. metres (403.6 sq. feet)



Second Floor

Approx. 31.9 sq. metres (343.8 sq. feet)



Accommodation

GROUND FLOOR

Entrance Hall

Cloakroom

Study: 8'10 x 7'7 (2.69m x 2.31m)

kitchen/Dining Area: 18'4 x 14'5 (5.59m x 4.40m)

FIRST FLOOR

Landing

Lounge: 14'5 maximum x 14'2 maximum (4.40m x 4.32m)

Bedroom 1: 14'5 into fitted wardrobes x 9'1 (4.40m x 2.77m)

En-Suite Shower Room

SECOND FLOOR

Landing

Bedroom 2: 14'5 into fitted wardrobes x 9'6 into bay (4.40m x 2.90m)

Bedroom 3: 14'5 x 7'0 (4.40m x 2.14m)

Family Bathroom

OUTSIDE

Rear Garden

Garage With Power Supply

Driveway



Main features

- A beautifully presented three story house
- Offering versatile accommodation
- Double glazing and gas central heating
- Garage with power supply, driveway to the side
- Set within a lovely quiet cul-de-sac with communal gardens
- Close to the beautiful historic market town of Petworth with an array of shops and boutiques, plus the National Trust Petworth House and Park



Nearest Schools

Primary School: Petworth CofE Primary School 0.4 miles

Secondary School: Midhurst Rother College 6.5 miles



Transport Information

Train Stations: Pulborough 5.6 miles, Billingshurst 8.2 miles, Haslemere 11.2 miles



Address

Toronto Road, Petworth, West Sussex, GU28



Directions

For directions to this property please contact us.



cubitt&west
Helping you move forwards

Call Pulborough Branch 01798 875151 ■ cubittandwest.co.uk



- Legal advice should be taken to verify fixtures/fittings, planning, alterations and/or lease details
- Appliances & services are untested, dimensions are approximate and floor plans are not to scale
- Through a Homewise Home For Life Plan people aged 60+ can secure this property for up to 59% less, by purchasing a Lifetime Lease.



21405530/20240410/KT/JD