



Price

£160,000

Leasehold

1x  1x  1x 

**Morgan Court, Station
Road, Petworth, West
Sussex, GU28**

OVER 60?

Secure this property
for up to **59% less!**



Video Tour available

cubitt&west
Helping you move forwards



Main features

- First floor retirement apartment
- Overlooking the landscaped communal garden
- Bright and airy accommodation, sitting on a corner plot position
- Residents concierge, communal lounge and kitchen area
- Walk to the bustling town centre
- No ongoing chain

Accommodation

FIRST FLOOR

Entrance Hall

Kitchen: 7'0 x 6'0 (2.14m x 1.83m)

Lounge: 16'3 x 10'7 (4.96m x 3.23m)

Bedroom: 15'6 x 13'3 into fitted wardrobes (4.73m x 4.04m)

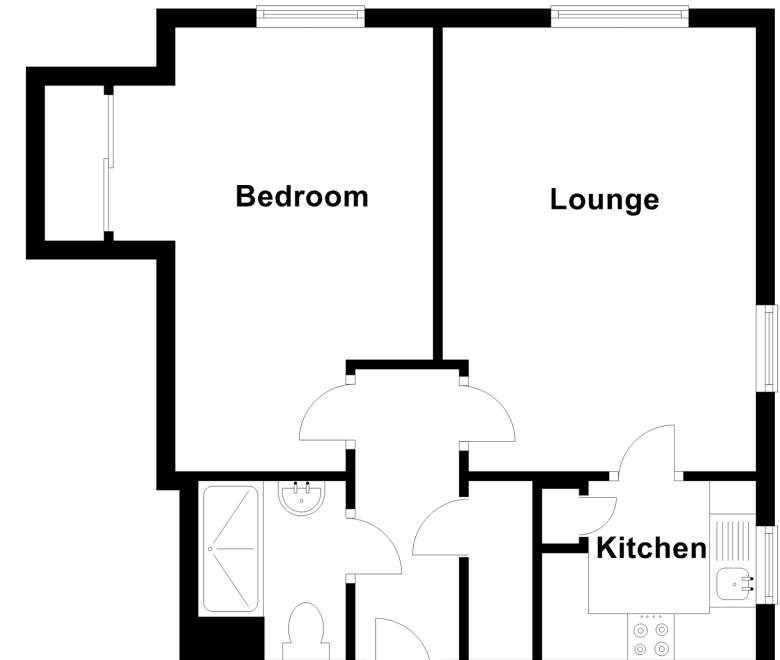
Wetroom

OUTSIDE

Communal Garden

First Floor

Approx. 44.3 sq. metres (476.6 sq. feet)



Call Pulborough - 01798 875151 ■ cubittandwest.co.uk

■ Legal advice should be taken to verify fixtures/fittings, planning, alterations and/or lease details
 ■ Through a Homewise Home For Life Plan people aged 60+ can secure this property for up to 59% less, by purchasing a Lifetime Lease.

■ Appliances & services are untested, dimensions are approximate and floor plans are not to scale