



OVER 60?

Secure this property
for up to **59% less!**

Price

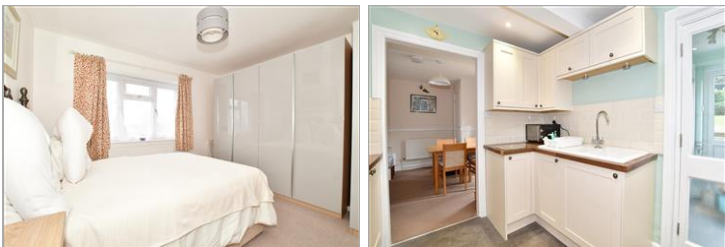
£350,000

Freehold

3x  1x  1x 

**Mant Road, Petworth,
West Sussex, GU28**

cubitt&west
Helping you move forwards



Main features

- No onward chain
- Quiet cul-de-sac
- Popular town location
- Easy access to the shops, plus pretty local countryside walks
- Triple glazing to most windows
- Lovely wood burner in the lounge

Accommodation

GROUND FLOOR

Entrance Hall

Lounge: 16'5 maximum x 9'11 (5.01m x 3.02m)

Dining Area: 10'9 x 8'1 (3.28m x 2.47m)

Kitchen: 9'0 x 8'2 (2.75m x 2.49m)

Utility Room: 5'11 x 4'11 (1.80m x 1.50m)

Cloakroom

FIRST

Landing

Shower Room

Bedroom 1: 11'7 x 11'4 maximum (3.53m x 3.46m)

Bedroom 2: 14'1 x 6'10 (4.30m x 2.08m)

Bedroom 3: 8'11 x 7'8 maximum (2.72m x 2.34m)

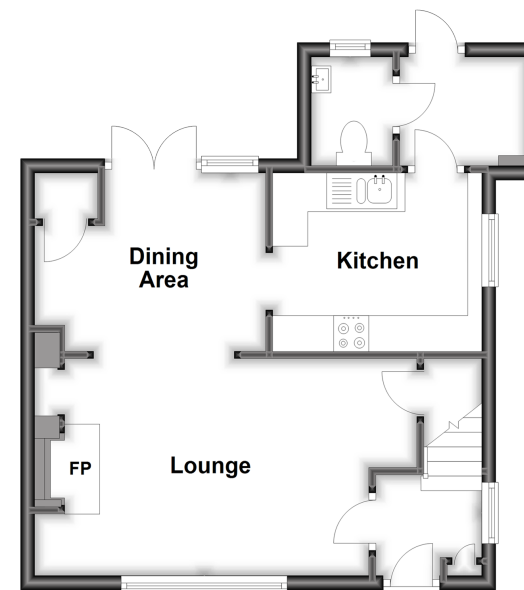
OUTSIDE

Front Garden

Rear Garden

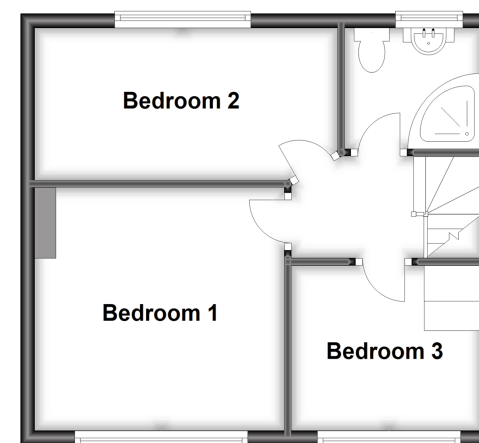
Ground Floor

Approx. 40.5 sq. metres (436.0 sq. feet)



First Floor

Approx. 35.9 sq. metres (386.7 sq. feet)



Call Pulborough - 01798 875151 ■ cubittandwest.co.uk

- Legal advice should be taken to verify fixtures/fittings, planning, alterations and/or lease details
- Appliances & services are untested, dimensions are approximate and floor plans are not to scale
- Through a Homewise Home For Life Plan people aged 60+ can secure this property for up to 59% less, by purchasing a Lifetime Lease.



21405624/20230718/CT/KT