



Price

£645,950

Freehold

3x  2x  1x 

Hawkins Field, Limbourne Lane,
Fittleworth, Pulborough, West Sussex,
RH20

cubitt&west
Helping you move forwards



Main features

- Stunning 3 bedroom semi-detached new home
- Contemporary Symphony kitchen
- Quality integrated AEG and Zanussi appliances
- White bathroom suites with Porcelanosa tiling
- Turfed rear garden

Accommodation

GROUND FLOOR

Entrance Hall
Cloakroom
Living Room: 19'7 x 12'1 (5.97m x 3.69m)
Kitchen/Dining Room: 19'7 x 11'3 (5.97m x 3.43m)
Utility Room

FIRST FLOOR

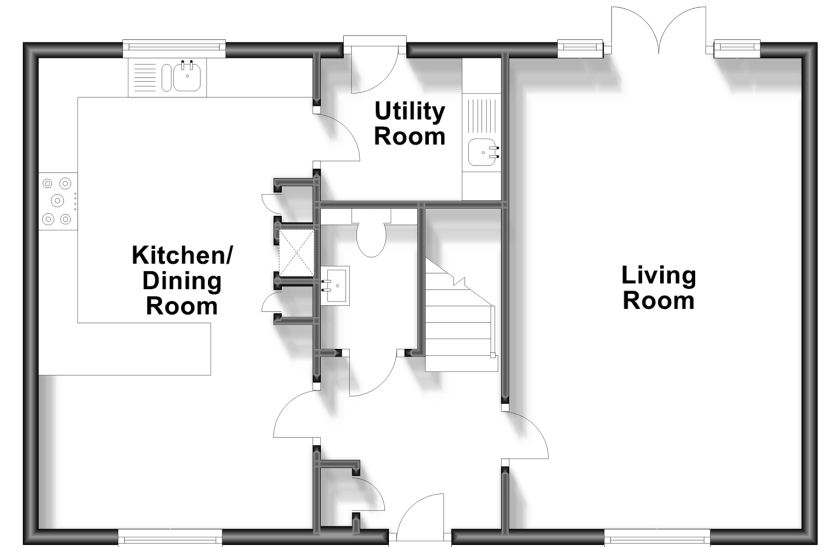
Landing
Bathroom
Bedroom 1: 12'3 up to fitted wardrobes x 10'5 (3.74m x 3.18m)
En-Suite Shower Room
Bedroom 2: 10'2 up to fitted wardrobes x 9'8 (3.10m x 2.95m)
Bedroom 3: 12'3 x 9'0 (3.74m x 2.75m)

OUTSIDE

Driveway
Car Port: 19'7 x 10'5 (5.97m x 3.18m)
Front Garden
Rear Garden

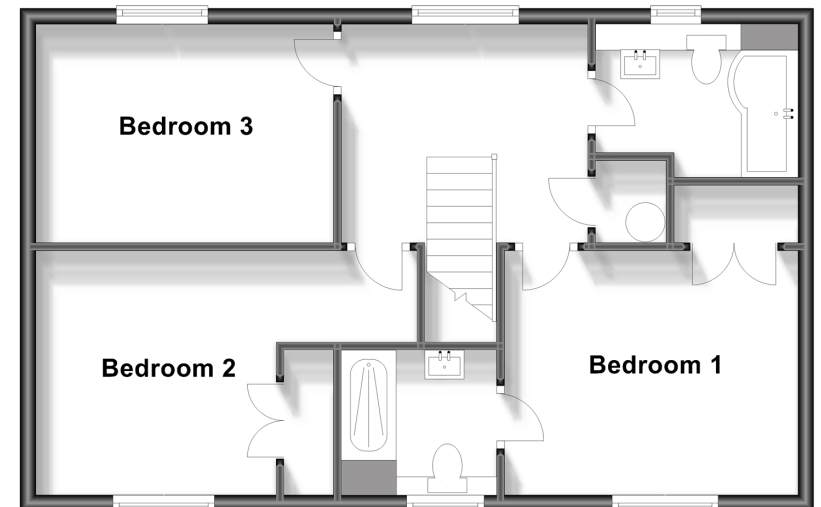
Ground Floor

Approx. 58.3 sq. metres (627.3 sq. feet)



First Floor

Approx. 58.3 sq. metres (627.3 sq. feet)



Call Pulborough - 01798 875151 ■ cubittandwest.co.uk

- If buying to let, the energy rating will need to be improved to at least 'E' rating before you can let the property
- Legal advice should be taken to verify fixtures/fittings, planning, alterations and/or lease details
- Appliances & services are untested, dimensions are approximate and floor plans are not to scale



21405723/20240205/CT/ML