

OVER 60?

Secure this property
for up to **59% less!**



Price

£680,000

Freehold

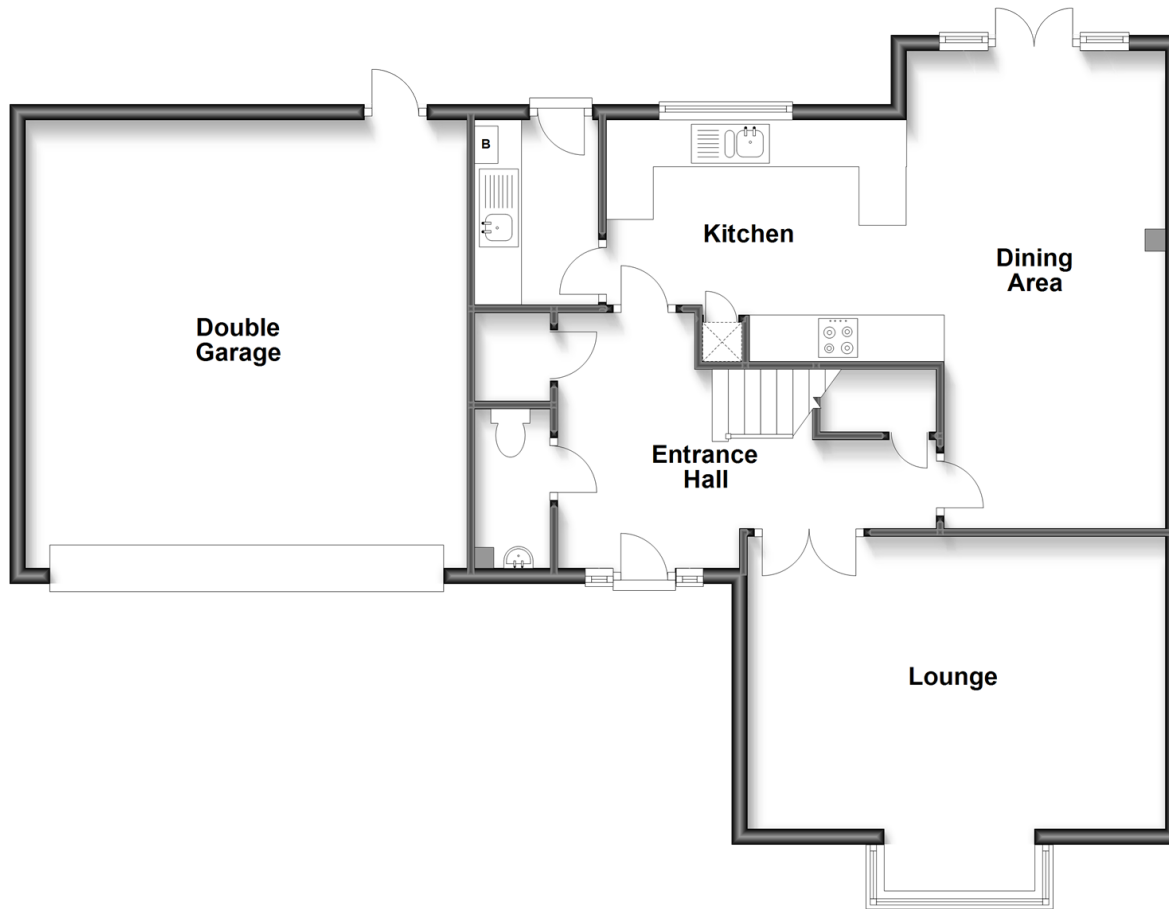
4x  3x  1x 

Oddstones, Codmore Hill, Pulborough,
West Sussex, RH20

cubitt&west
Helping you move forwards

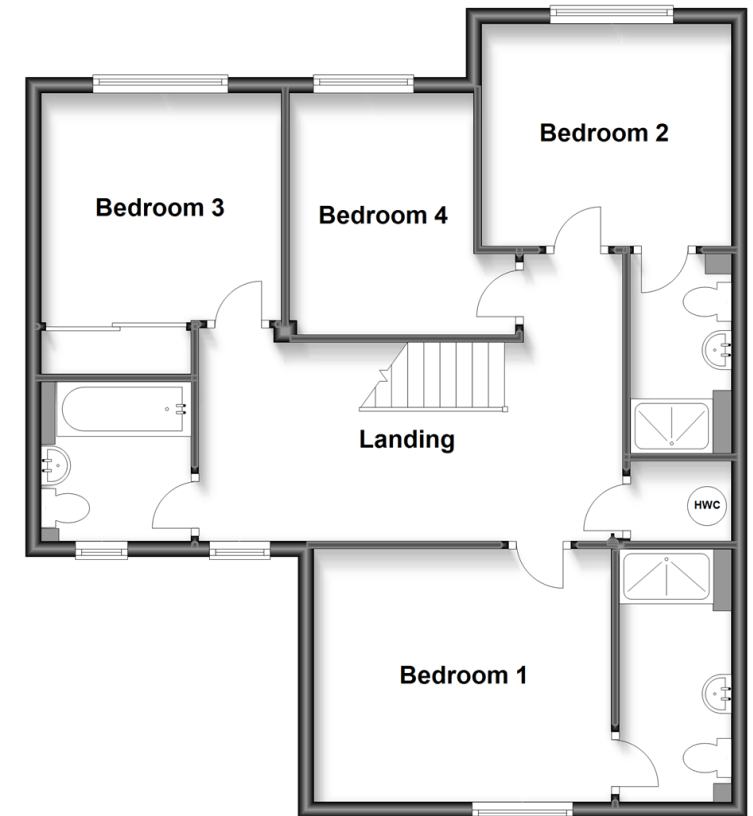
Ground Floor

Approx. 108.2 sq. metres (1164.2 sq. feet)



First Floor

Approx. 72.9 sq. metres (784.3 sq. feet)



Accommodation

GROUND FLOOR

Entrance Hall
Cloakroom
Lounge: 17'9 x 12'4 into bay (5.41m x 3.76m)
Dining Area: 20'3 x 11'1 (6.18m x 3.38m)
Kitchen: 12'8 x 10'2 (3.86m x 3.10m)
Utility Room

FIRST FLOOR

Landing
Family Bathroom
Bedroom 1: 12'9 x 10'8 (3.89m x 3.25m)
En-Suite Shower Room
Bedroom 2: 11'1 x 9'9 (3.38m x 2.97m)
En-Suite Shower Room
Bedroom 3: 12'0 x 10'0 up to fitted wardrobes (3.66m x 3.05m)
Bedroom 4: 10'4 x 7'7 (3.15m x 2.31m)

OUTSIDE

Double Width Driveway
Double Garage
Front Garden
Rear Garden



Main features

- Generous size executive style family home with flexible accommodation
- Quiet cul-de-sac location
- Two en-suite shower rooms
- Lovely modern kitchen, separate utility room, plus a large dining area, perfect for modern living and entertaining with family and friends
- Walking distance of local shops, pharmacy, and the primary school



Nearest Schools

Primary School: St Mary's C of E Primary School 1.4 miles

Secondary School: The Weald School 5.4 miles



Transport Information

Train Stations: Pulborough 1.7 miles, Amberley 5.2 miles



Address

Oddstones, Codmore Hill, Pulborough, West Sussex, RH20



Directions

For directions to this property please contact us.



cubitt&west
Helping you move forwards

Call Pulborough Branch 01798 875151 ■ cubittandwest.co.uk



■ Legal advice should be taken to verify fixtures/fittings, planning, alterations and/or lease details ■ Appliances & services are untested, dimensions are approximate and floor plans are not to scale
■ Through a Homewise Home For Life Plan people aged 60+ can secure this property for up to 59% less, by purchasing a Lifetime Lease.



21405757/20230313/KT/KT