



Price
£525,000

Freehold

4x  3x  3x 

**Churchfield, Fittleworth,
West Sussex, RH20**

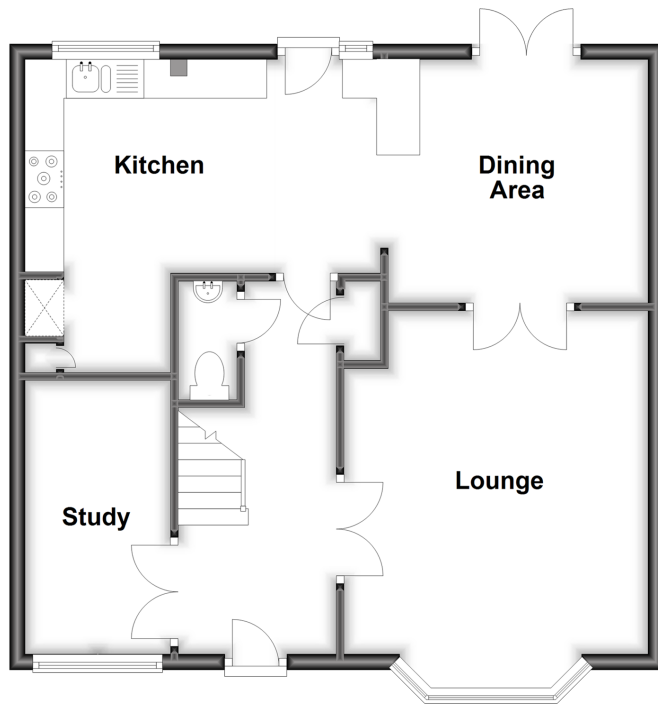
OVER 60?

Secure this property
for up to **59% less!**

cubitt&west
Helping you move forwards

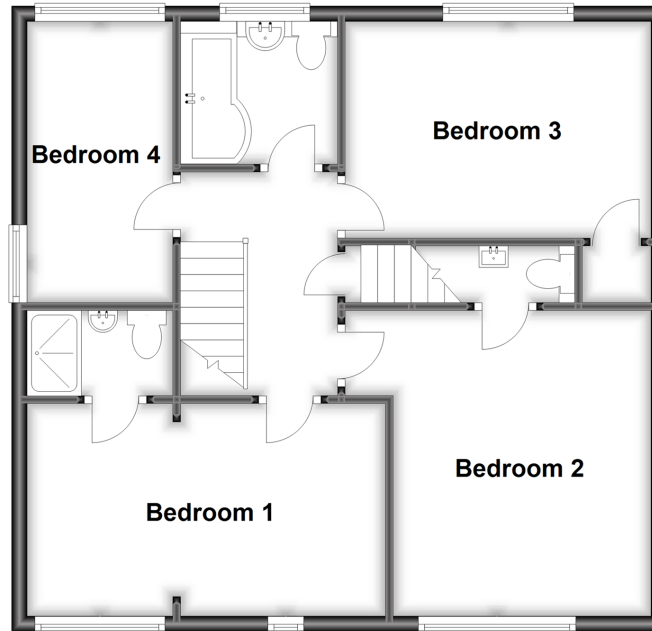
Ground Floor

Approx. 61.6 sq. metres (663.5 sq. feet)



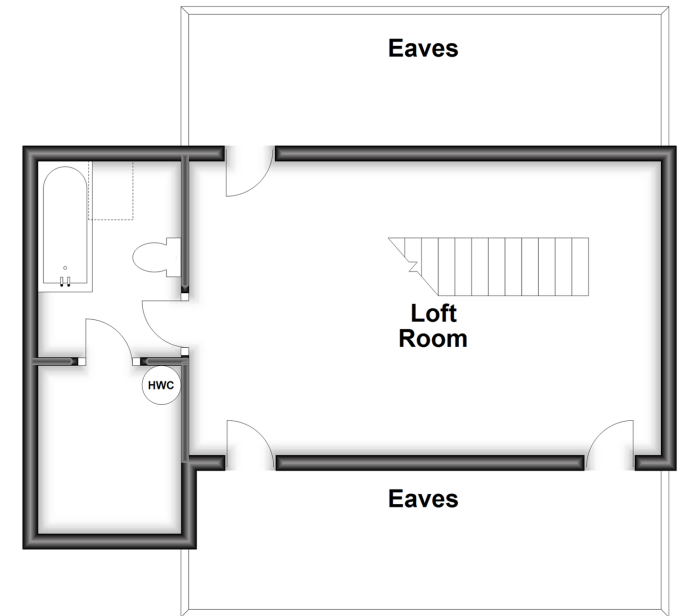
First Floor

Approx. 61.2 sq. metres (658.6 sq. feet)



Second Floor

Approx. 32.2 sq. metres (346.2 sq. feet)



Accommodation

GROUND FLOOR

Entrance Hall

Cloakroom

Lounge: 16'5 into bay x 12'10 (5.01m x 3.91m)

Dining Area: 10'11 x 10'3 (3.33m x 3.13m)

Kitchen: 14'10 x 13'2 (4.52m x 4.02m) narrowing to 9'1 x 6'1 (2.77m x 1.86m)

Study: 11'5 x 6'0 (3.48m x 1.83m)

FIRST FLOOR

Landing

Family Bathroom

Bedroom 1: 15'4 maximum x 8'7 (4.68m x 2.62m)

En-Suite Shower Room

Bedroom 2: 12'10 x 10'11 (3.91m x 3.33m)

Cloakroom

Bedroom 3: 12'11 x 9'3 up to fitted wardrobes (3.94m x 2.82m)

Bedroom 4: 11'7 x 6'1 (3.53m x 1.86m)

SECOND FLOOR

Loft Room: 19'11 x 12'8 (6.07m x 3.86m)

En-Suite Bathroom

OUTSIDE

Off Road Parking

Garage En-Bloc

Rear Garden



Main features

- Good sized family home
- Useful study, ideal for working from home or for a child's playroom or even a teenage den
- Large loft room with an en-suite bathroom
- Off road parking for 3 cars, plus a garage en-bloc
- Pretty village location with lovely countryside walks



Nearest Schools

Primary School: Fittleworth CofE Village School

Secondary School: The Weald, Billingshurst 9.1 miles



Transport Information

Train Stations: Pulborough 2.1 miles, Amberley 4.7 miles



Address

Churchfield, Fittleworth, West Sussex, RH20



Directions

For directions to this property please contact us.





cubitt&west
Helping you move forwards

Call Pulborough Branch 01798 875151 ■ cubittandwest.co.uk



- Legal advice should be taken to verify fixtures/fittings, planning, alterations and/or lease details
- Appliances & services are untested, dimensions are approximate and floor plans are not to scale
- Through a Homewise Home For Life Plan people aged 60+ can secure this property for up to 59% less, by purchasing a Lifetime Lease.



21405767/20230307/CT/KT