



Price
£350,000

Freehold

2x  2x  1x 

**Northend Close,
Petworth, West Sussex,
GU28**

OVER 60?

Secure this property
for up to **59% less!**

cubitt&west
Helping you move forwards



Main features

- Quiet cul-de-sac location
- Lovely conservatory overlooking the rear garden
- Garage with driveway
- Set in a picturesque town location
- Stunning views over fields to the rear of the property

Accommodation

GROUND FLOOR

Entrance Hall
Cloakroom
Lounge: 15'2 maximum x 14'11 maximum (4.63m x 4.55m)
Kitchen/Diner: 14'10 x 10'0 (4.52m x 3.05m)
Conservatory: 12'3 maximum x 9'5 maximum (3.74m x 2.87m)

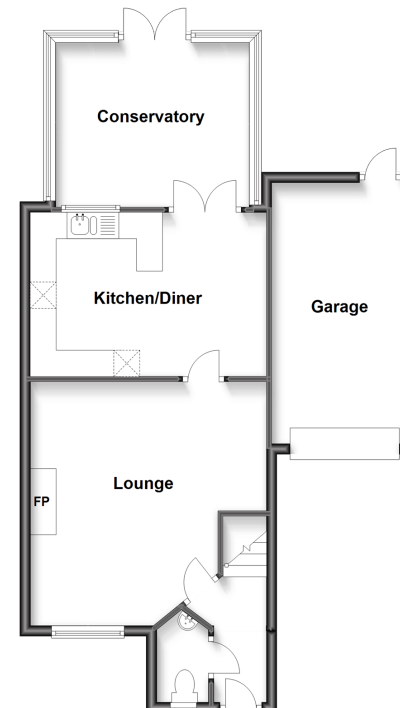
FIRST FLOOR

Landing
Family Bathroom
Bedroom 1: 12'3 up to fitted wardrobes x 8'2 (3.74m x 2.49m)
En-Suite Shower Room
Bedroom 2 : 10'10 x 8'3 (3.30m x 2.52m)

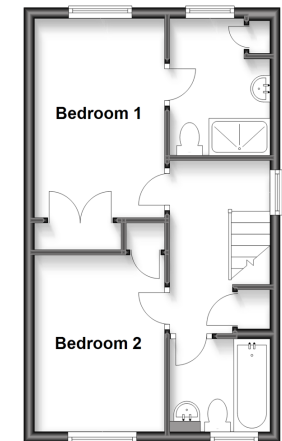
OUTSIDE

Garage
Driveway
Front Garden
Rear Garden

Ground Floor
Approx. 64.1 sq. metres (690.1 sq. feet)



First Floor
Approx. 35.6 sq. metres (383.1 sq. feet)



Call Pulborough - 01798 875151 ■ cubittandwest.co.uk

■ Legal advice should be taken to verify fixtures/fittings, planning, alterations and/or lease details
■ Through a Homewise Home For Life Plan people aged 60+ can secure this property for up to 59% less, by purchasing a Lifetime Lease.

■ Appliances & services are untested, dimensions are approximate and floor plans are not to scale



21405796/20230727/KT/KT