

OVER 60?

Secure this property
for up to **59% less!**



Price
£450,000
Freehold

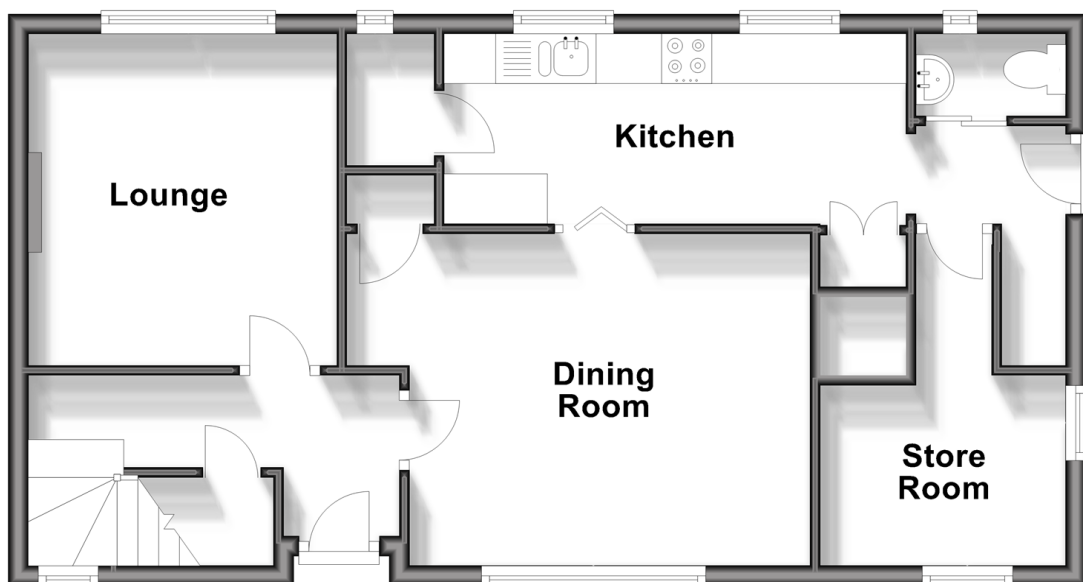
3x  1x  2x 

Spierbridge Road, Storrington, West
Sussex, RH20

cubitt&west
Helping you move forwards

Ground Floor

Approx. 54.9 sq. metres (591.3 sq. feet)



First Floor

Approx. 47.8 sq. metres (514.0 sq. feet)



Accommodation

GROUND FLOOR

Entrance Hall

Lounge: 11'0 x 10'3 maximum (3.36m x 3.13m)

Dining Room: 13'2 x 11'0 (4.02m x 3.36m)

Kitchen: 15'1 x 6'0 (4.60m x 1.83m)

Cloakroom

Store Room: 8'3 x 6'1 (2.52m x 1.86m)

FIRST FLOOR

Landing

Family Bathroom

Bedroom 1: 14'2 up to fitted wardrobes x 10'6 (4.32m x 3.20m)

Bedroom 2: 11'9 x 9'2 (3.58m x 2.80m)

Bedroom 3: 13'9 x 8'0 (4.19m x 2.44m)

OUTSIDE

Off Road Parking

Driveway

Rear Garden

ANNEX

Lounge: 21'10 x 14'4 (6.66m x 4.37m)

Kitchen Area: 7'3 x 6'8 (2.21m x 2.03m)

Bedroom 1: 14'4 x 10'0 up to recess (4.37m x 3.05m)

En-Suite Shower Room

Bedroom 2: 14'4 x 9'8 up to recess (4.37m x 2.95m)

En-Suite Shower Room

Cloakroom



Main features

- A wonderful spacious home with solar panels
- A fantastic two bedroom annex in the rear garden with under floor heating, ideal for elderly parents or for growing teenagers
- Ample off road parking, plus a driveway
- Double glazed windows and gas central heating
- Offered for sale with No Onward Chain
- Close to the primary school, park, shops, Doctors, leisure centre and public transport



Nearest Schools

Primary School: Storrington Primary School, Spierbridge Road

Secondary School: Steyning Grammar School; Lower School, Rock Road site 1.2 miles, Upper School, Shooting



Transport Information

Train Stations: Amberley 4.8 miles, Pulborough 4.9 miles, Billingshurst 8.5 miles



Address

Spierbridge Road, Storrington, West Sussex, RH20



Directions

For directions to this property please contact us.



cubitt&west
Helping you move forwards

Call Pulborough Branch 01798 875151 ■ cubittandwest.co.uk



■ Legal advice should be taken to verify fixtures/fittings, planning, alterations and/or lease details ■ Appliances & services are untested, dimensions are approximate and floor plans are not to scale
■ Through a Homewise Home For Life Plan people aged 60+ can secure this property for up to 59% less, by purchasing a Lifetime Lease.



21405841/20240325/KT/JD