

OVER 60?

Secure this property
for up to **59% less!**



Price

£210,000

Leasehold

1x  1x  1x 

Holly Court, Storrington, West Sussex,
RH20

cubitt&west
Helping you move forwards

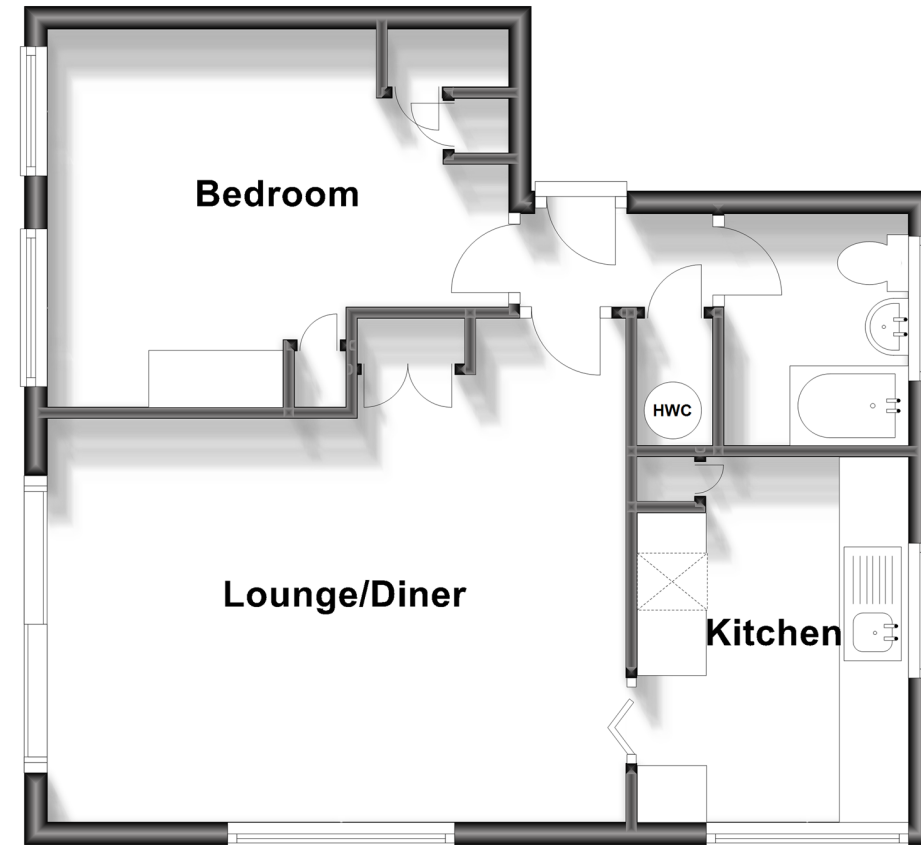


Main features

- A very well presented ground floor apartment in a quiet cul-de-sac
- Lovely sunny private patio area
- Double glazed windows throughout
- Close to Storrington High Street
- Long lease of 939 years remaining

Ground Floor

Approx. 46.7 sq. metres (502.4 sq. feet)



Accommodation

GROUND FLOOR

Entrance Hall

Bathroom

Lounge/Diner: 16'7 x 14'6 (5.06m x 4.42m)

Kitchen: 8'10 x 8'0 (2.69m x 2.44m)

Bedroom : 13'1 x 11'0 (3.99m x 3.36m)

OUTSIDE

Allocated Parking

Patio Area

Communal Gardens

Call Pulborough - 01798 875151 ■ cubittandwest.co.uk

- Legal advice should be taken to verify fixtures/fittings, planning, alterations and/or lease details
- Appliances & services are untested, dimensions are approximate and floor plans are not to scale
- Through a Homewise Home For Life Plan people aged 60+ can secure this property for up to 59% less, by purchasing a Lifetime Lease.



21405852/20231212/CT/JD